

UNIVERSITY POINTE I & II

FOR LEASE

Commerce Dr. & Century Dr.,
Edwardsville, IL 62025



MULTIPLE SUITES AVAILABLE

BARBERMURPHY

COMMERCIAL REAL ESTATE SOLUTIONS
1173 Fortune Blvd., Shiloh, IL 62269
618.277.4400 BARBERMURPHY.COM

Collin Fischer - CCIM
Designated Managing Broker
Cell: (618) 420-2376
collinf@barbermurphy.com



PROPERTY HIGHLIGHTS

UNIVERSITY POINTE I & II, EDWARDSVILLE, IL 62025



Office/Retail spaces
from 1,295 SF

Restaurant Space
Available

Historically Low
Vacancy &
Professionally
Managed



LEASE RATE:
\$24.00 PER SF, NNN

AREA MAP

UNIVERSITY POINTE I & II, EDWARDSVILLE, IL 62025

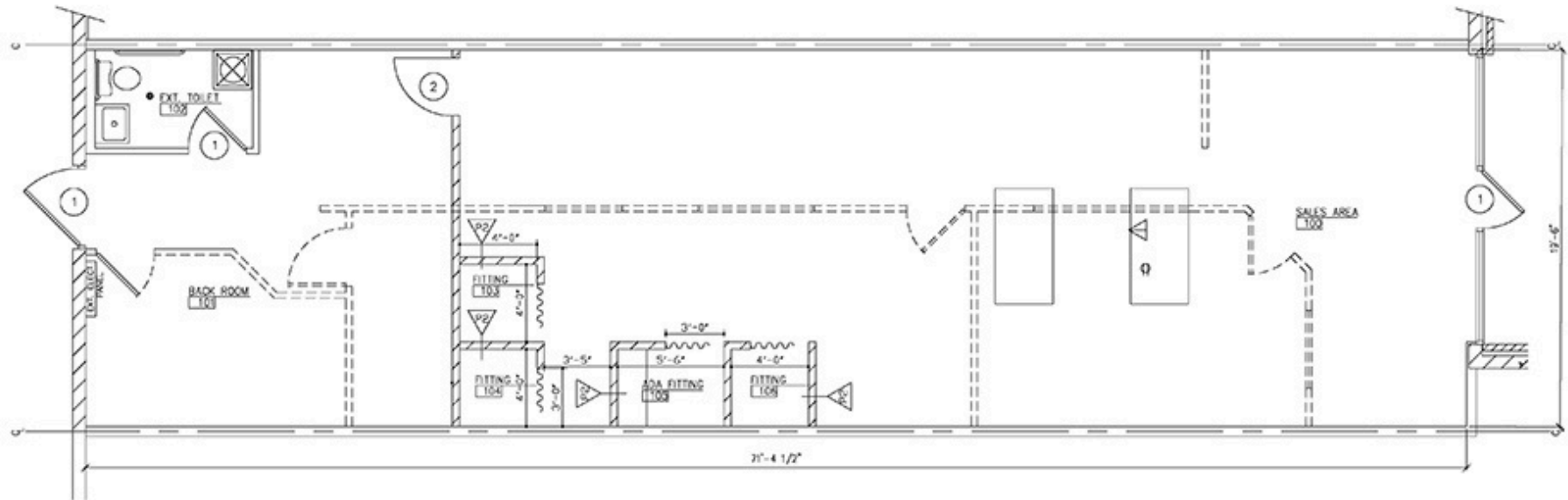


LOCATION OVERVIEW

University Pointe is located along IL route 157 near the entrance to SIUE. Edwardsville IL has some of the best demographics in the St Louis MSA and has become a retail and dining destination for most of the surrounding communities, creating a trade population of 500k+

FLOOR PLAN - SUITE 6 - RETAIL SPACE

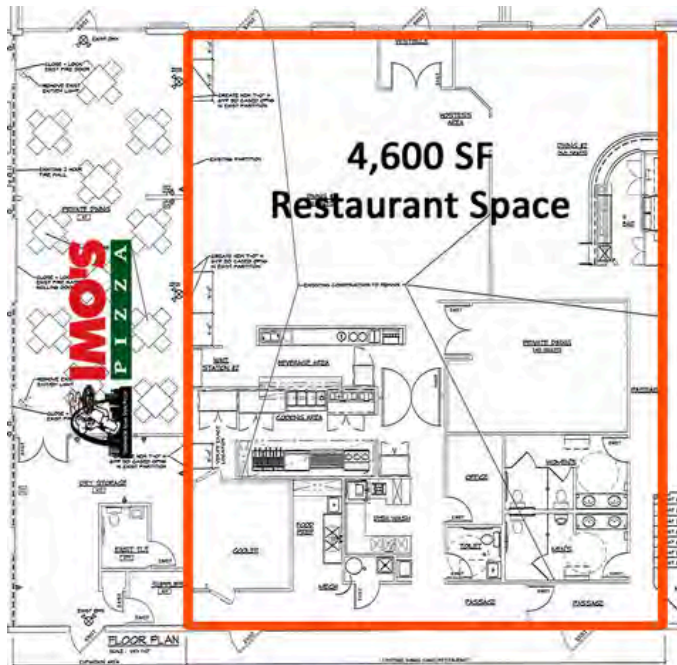
UNIVERSITY POINTE II, EDWARDSVILLE, IL 62025



*Not to scale

FLOOR PLAN - SUITE 16 - RESTAURANT SPACE

UNIVERSITY POINTE II, EDWARDSVILLE, IL 62025

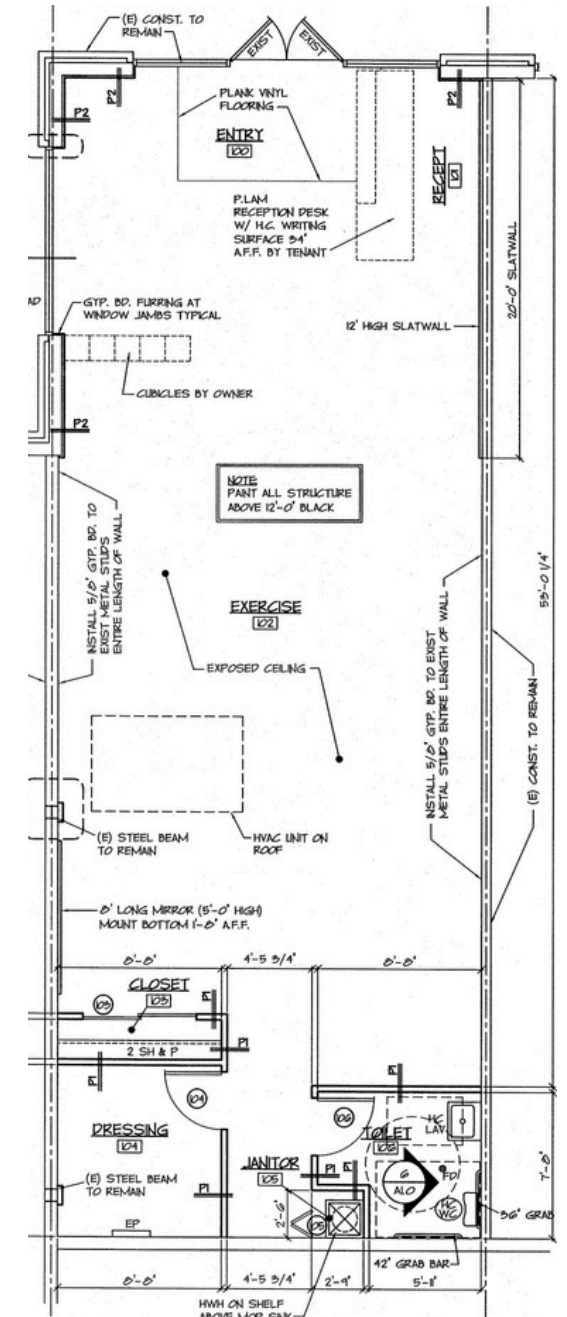


*Not to scale



FLOOR PLAN - SUITE 19B - OFFICE/RETAIL SPACE

UNIVERSITY POINTE II, EDWARDSVILLE, IL 62025

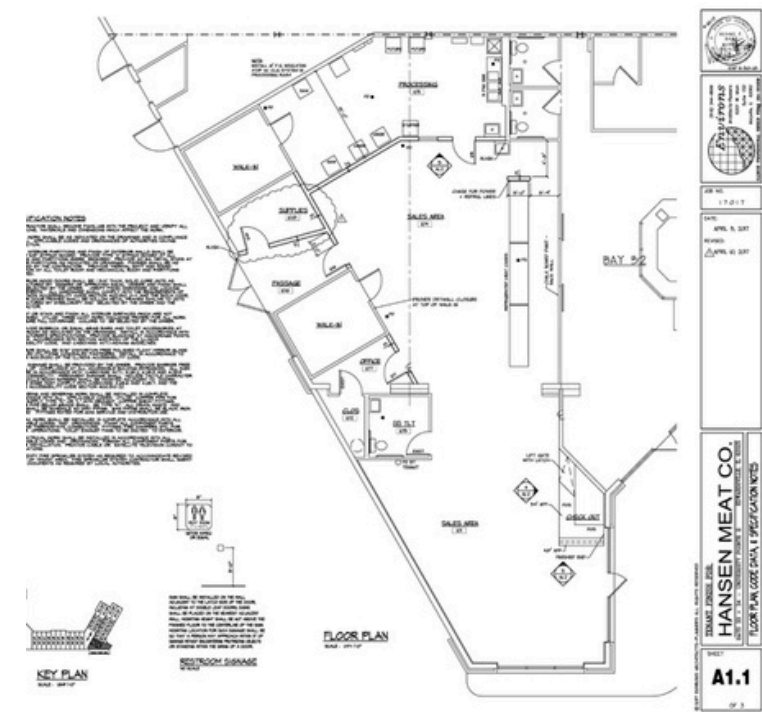


*Not to scale

FLOOR PLAN
SCALE 1/4" = 1'-0"
GRADE SECT. 1 & 2

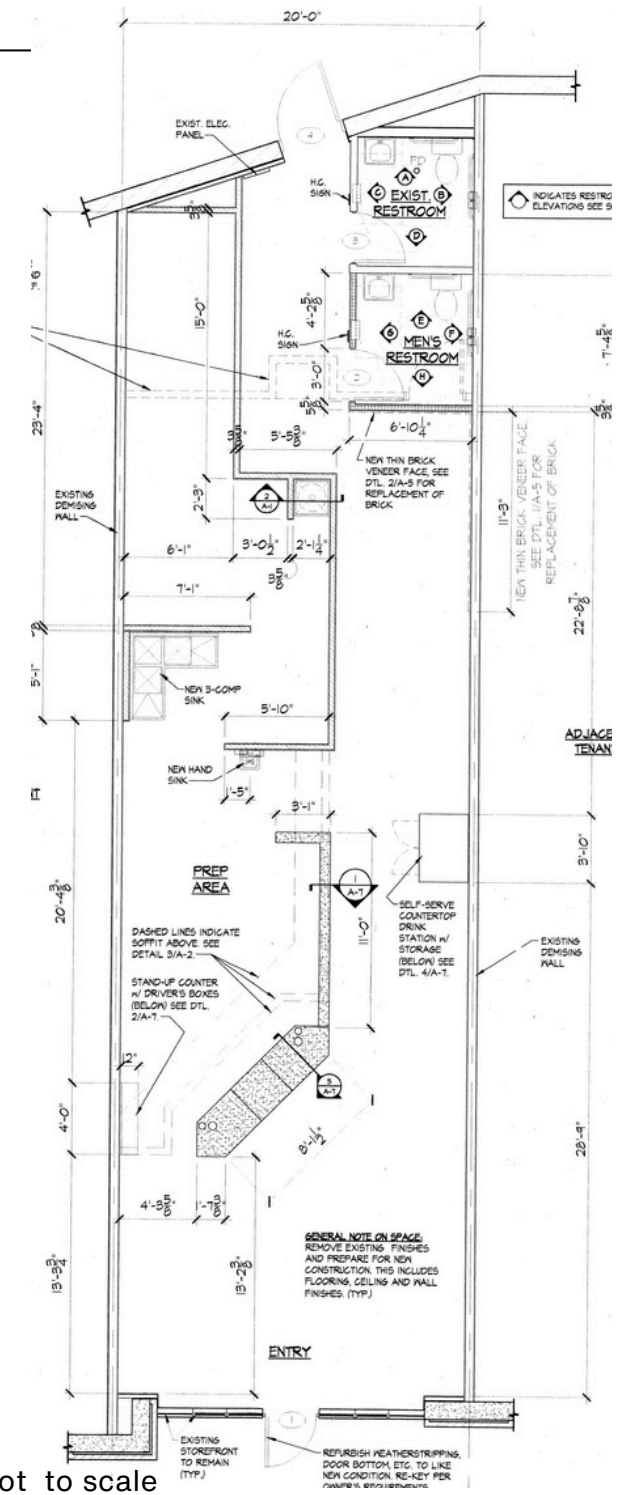
FLOOR PLAN - SUITE 30 - OFFICE/RETAIL SPACE

UNIVERSITY POINTE II, EDWARDSVILLE, IL 62025



FLOOR PLAN - SUITE 3 - RESTAURANT/RETAIL SPACE

UNIVERSITY POINTE I, EDWARDSVILLE, IL 62025



*Not to scale

OFFICE/RETAIL PROPERTY SUMMARY

1041 CENTURY DR

LISTING # 2041

LOCATION DETAILS:

Parcel # 14-1-15-22-00-000-002.005
County: IL - Madison
Zoning: B-2

PROPERTY OVERVIEW:

Building SF: 54,644
Vacant SF: 12,000
Office SF: 2,883
Retail SF: 12,000
Min Divisible SF: 1,295
Max Contig SF: 4,600
Signage: Monument
Lot Size: 13.0 Acres
Frontage: 700
Depth: 350
Parking Spaces: 4/1,000
Parking Surface Type: Asphalt

STRUCTURAL DATA:

Year Built: 2003
Renovated: 2023
Building Class: B
Ceilings: 10'-12'



LEASE INFORMATION:

Lease Rate: \$24.00/SF
Lease Type: NNN
NNN Expenses: \$6.88

FINANCIAL INFORMATION:

Taxes: \$193,604
Tax Year: 2023

DEMOGRAPHICS:

Traffic Count: 21,100

PROPERTY DESCRIPTION:

Professionally managed center with excellent tenant mix. Restaurant space available.