

FOR LEASE

23 Public Square
Belleville, IL 62220



CLASS A OFFICE AND RETAIL SPACES

BARBERMURPHY
COMMERCIAL REAL ESTATE SOLUTIONS
1173 Fortune Blvd., Shiloh, IL 62269
618.277.4400 BARBERMURPHY.COM

John L. Eichenlaub
Managing Broker
Office: (618) 277-4400 (Ext. 15)
Cell: (618) 570-8344
john@barbermurphy.com

Katie Bush
Broker Associate
Office: (618) 277-4400 (Ext. 27)
Cell: (701) 213-3301
katieb@barbermurphy.com





● ● ●
● ● ● JOIN THE
● ● ● FOLLOWING
● ● ● TENANTS:

Edward Jones

Huntleigh Securities

Mathis, Marifian & Richter, LTD.

Baker Sterchi Cowden & Rice LLC

Raymond James

U.S. Senator Tammy Duckworth

TREKK Design Group





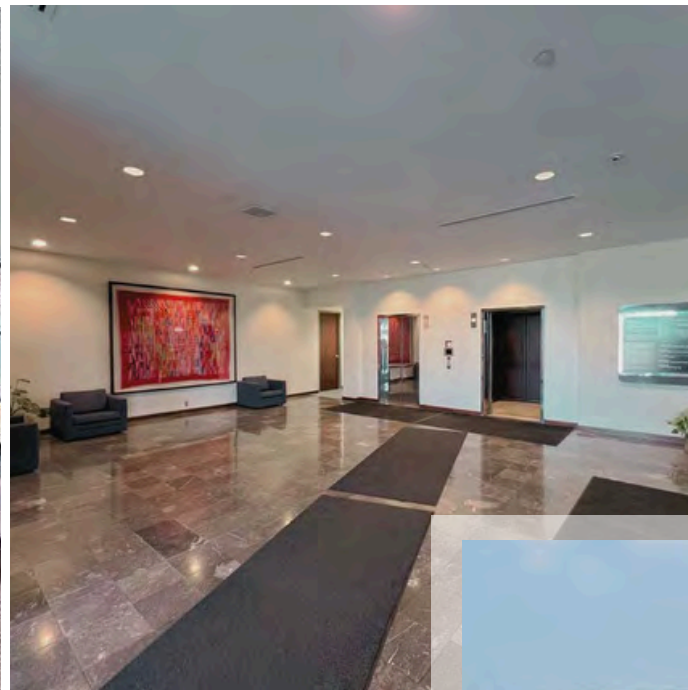
TENANT AMENITIES



The main entrance is situated directly off of the common parking area for tenants and adjacent to public parking.



2nd floor large conference room available by reservation.



The building overlooks the iconic Belleville Square and Main Street.

Located directly across from St. Clair County Courthouse; within walking distance of numerous restaurants and shops.

BARBERMURPHY





MAIN FLOOR LOBBY

The Main Floor Lobby Space would be ideal for a Restaurant with views of the Square and Fountain.

BARBERMURPHY



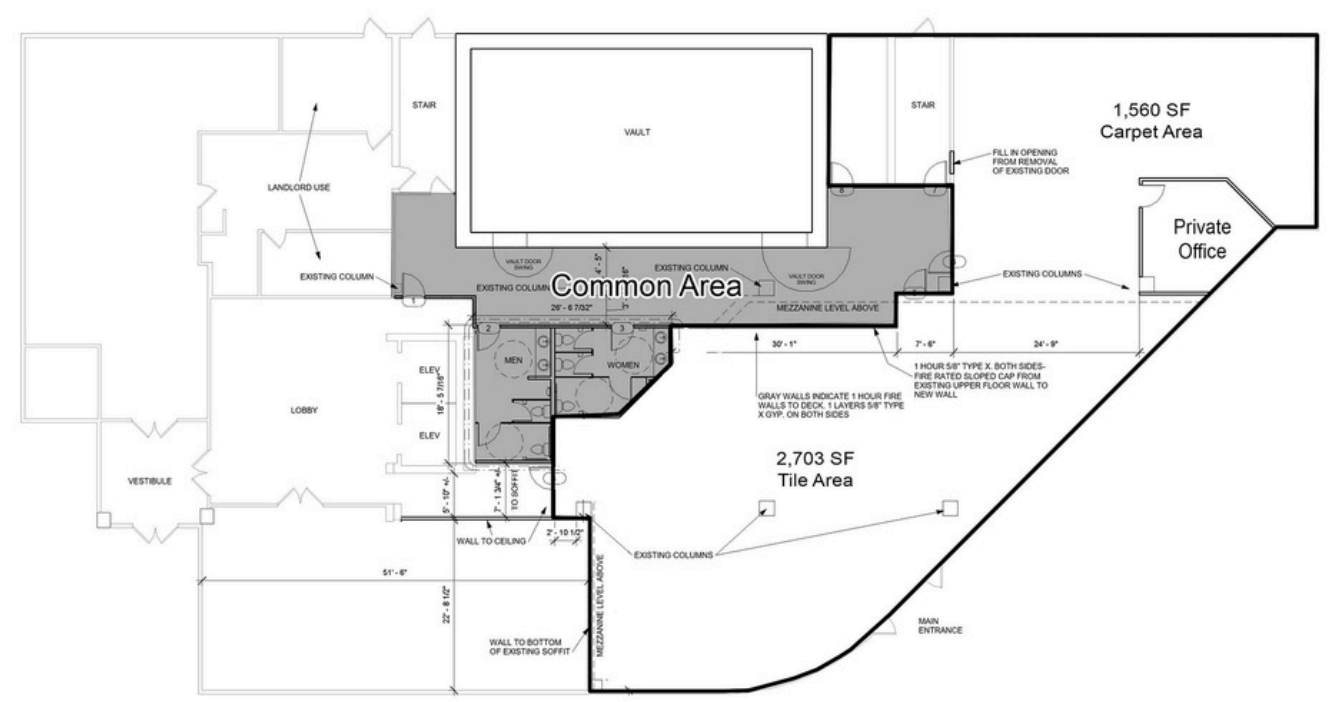
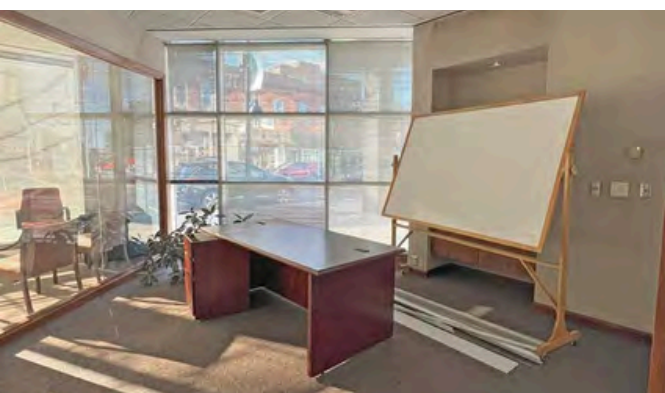


● ● ● ●
 ● ● ● ● SUITE 100
 ● ● ● ● 4,263 SF
 ● ● ● ●
 WILL DIVIDE

This suite overlooks the iconic Belleville public square directly on Main St.

The office space features modern amenities to cater to the needs of businesses of all kinds.

With a welcoming environment, these office and retail spaces are an ideal choice for anyone looking for a prime location to set up their business.





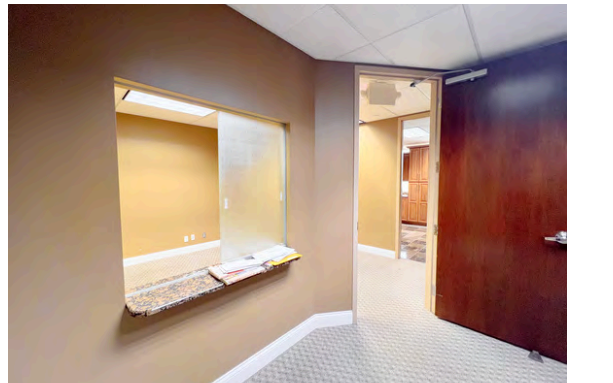
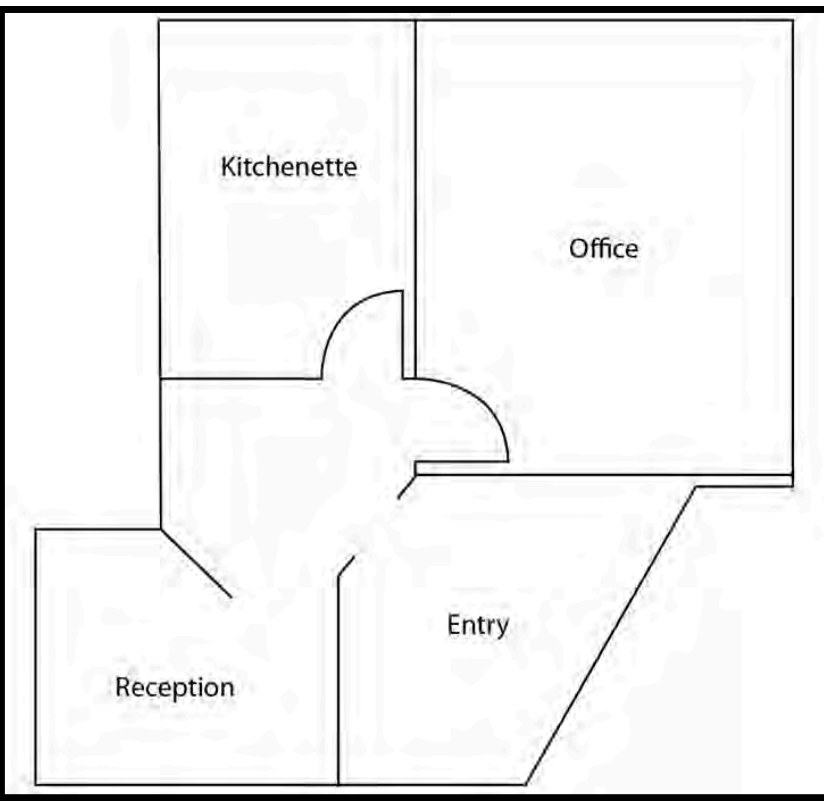
SUITE 230
723 SF

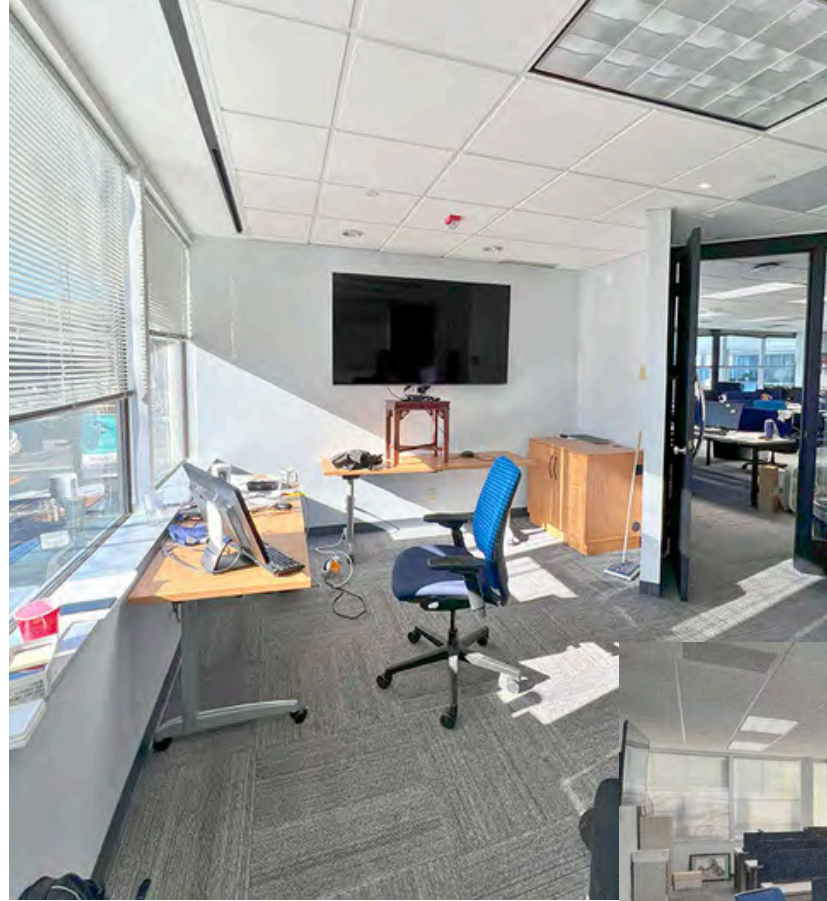
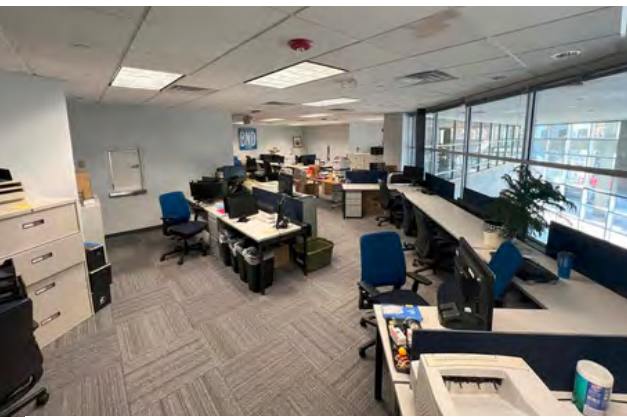


This space features an entry way/waiting room with reception window with office area.

An additional large private office.

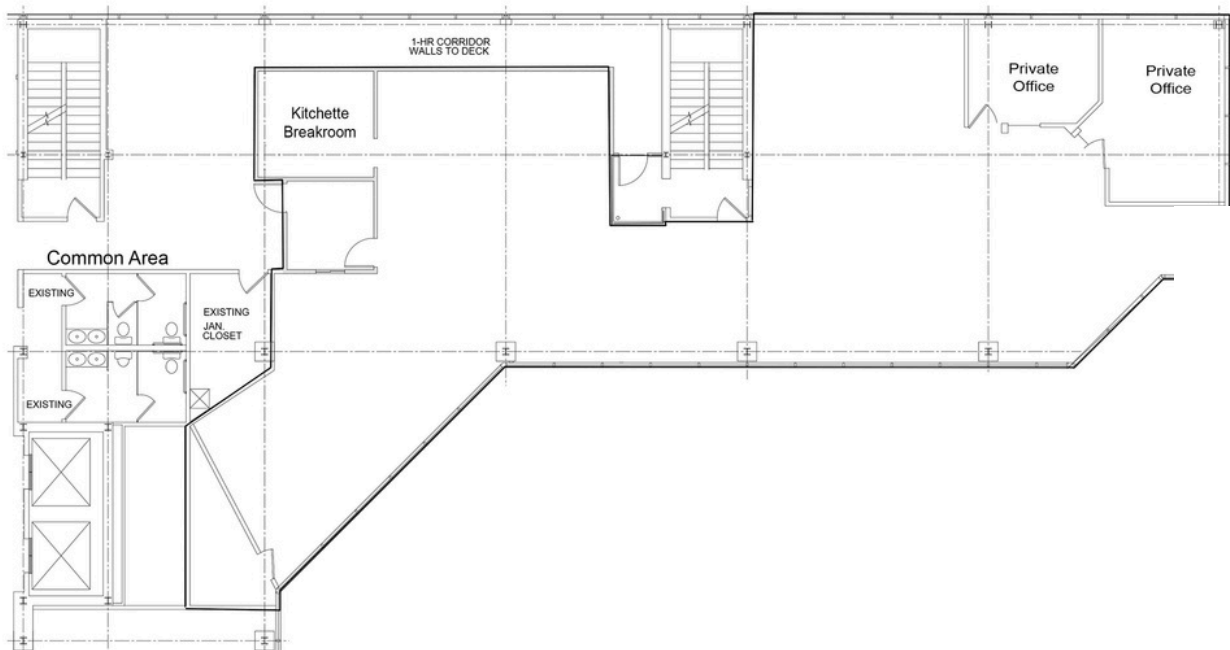
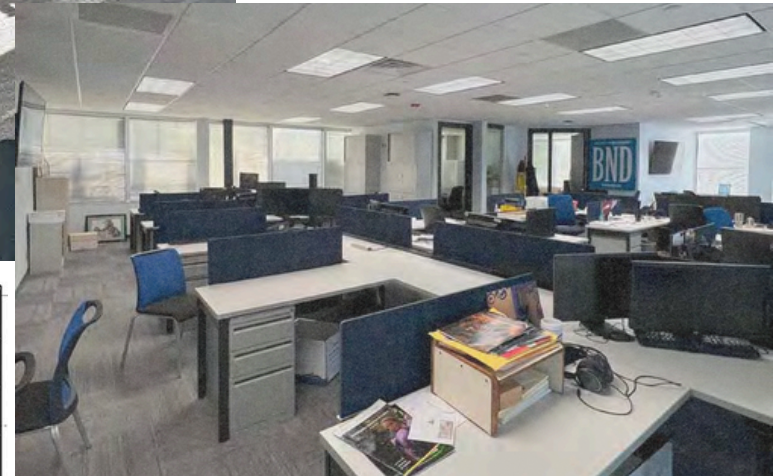
Kitchenette equipped with a sink, dishwasher, and microwave



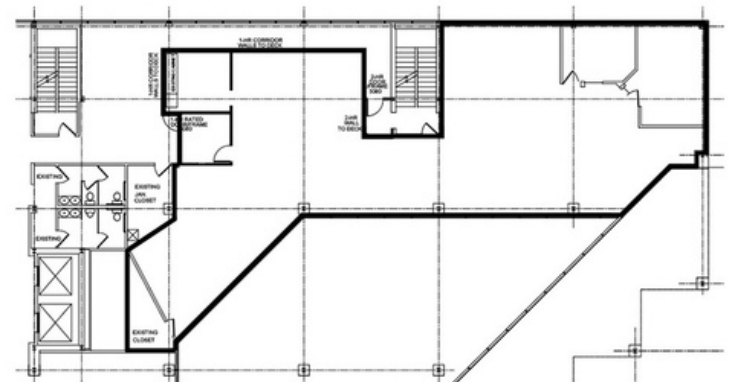


SUITE 240
3,500 SF

Located on the second floor by elevator or stairs overlooking the Belleville Public Square and downtown main street.



KEY PLAN - TENANT SPACE



AREA MAP

23 Public Square, Belleville, IL 62220



LOCATION OVERVIEW

The office/retail spaces are strategically situated in Downtown Belleville, IL, on the Public Square, surrounded by the local conveniences and amenities of Main Street. Being centrally located in the heart of the city, these office and retail spaces offer easy access to public transportation, making it convenient for employees and customers alike to reach the destination. The Public Square is a vibrant area with a variety of shops, restaurants, cafes, and entertainment venues, providing a perfect blend of work and leisure for those who work, live and visit the area.



EXIT

I-64 / 6 Miles
I-255 / 10 Miles

Exit 12 / I-64
Exit 17 / I-255



MidAmerica Airport
26 miles

Belleville Main Street

LIVE. WORK. SHOP. PLAY.

All within walking distance

SCAN TO VISIT
www.bellevillemainstreet.net



- Abe's Gourmet Popcorn - 1
- Artisans Off Main - 2
- Belleville Books - 3
- Blanquart's Jewelers - 4
- Blanquart's Rusty Gem - 5
- Circa Boutique - 6
- Collector's Corner/I Had That - 7
- Community Kindness - 8
- Down the Hall Homebrew - 9
- Eckert's Florist - 10
- Elated Hearts - 11
- Eye on Design - 12
- Grimm & Gorly Florist & Gifts - 13
- Halo Boutique - 14
- JSB Designs - 15
- Keil's Clock Shop - 16
- Local Lucy's - 17
- Sawdust & Glitter - 18
- Toot's Cake & Candy Supply - 19



- Bennie's Pizza Pub - 20
- Big Daddy's 618 - 21
- Bungalow - 22
- Casa Maria Mexican Grill - 23
- Chaos - 24
- Charlie's - 25
- Cigar Inn - 26
- Copper Fire - 27
- Grafted Wine Bar - 28
- Gruv Bistro & Wine Bar - 29
- Justitia's Coffee - 30
- Margarita's Mexican Restaurant - 31
- Maya's Juice Bar - 32
- Papa Vito's - 33
- Pour@322 - 34
- Rachel's Side Bar - 35
- Shoehorn Brewing - 36
- SPACES - 37
- Sugar High Bakery & Cafe - 38
- Sweet Cakes - 39
- Tavern on Main - 40
- The Office Lounge - 41
- Venue on Main - 42



- Belle City Fitness - 43
- Belleville Public Library - 44
- Belleville Theatre Company - 45
- Gabrielle's Step by Step Dance Studio - 46
- Green Root Gallery - 47
- The Lincoln Theatre - 48



- All Star Carpet & Upholstery - 49
- Ambassador Travel - 50
- Avenue Realty - 51
- Egyptian Workspace Partners - 52
- Belle Court Manor - 53
- Farnsworth Group - 54
- Firestone - 55
- Governor French Academy - 56
- Hair Cureology - 57
- Hair on Main - 58
- Heartland's Conservancy - 59
- Integrity Tattoos - 60
- Kaskaskia Engineering Group - 61
- Liese Lumber - 62
- Lochmueller Group - 63
- Mathis Marfian & Richter - 64
- Nester Realty - 65
- Dates & Assoc. - 66
- Precision Practice Management - 67
- Raymond James & Assoc. Inc. - 68
- St. Clair County Courthouse - 69
- St. Clair County Health Department - 70
- Scheffel Boyle - 71
- Shelter Insurance - 72
- Stages Wellness Holistic Center - 73
- Super 8 - 74

MEET US ON MAIN STREET
In Downtown Belleville

SUBJECT PROPERTY

Public Parking Lots

OFFICE/RETAIL PROPERTY SUMMARY

23 PUBLIC SQUARE

LISTING # 1781

LOCATION DETAILS:

Parcel #: 08-21.0-439-026
County: IL - St. Clair
Zoning: B-1 - City of Belleville

PROPERTY OVERVIEW:

Building SF: 61,898
Vacant SF: 8,486
Min Divisible SF: 723
Max Contig SF: 4,263
Lot Size: 1.0 Acres
Parking Ratio: 3 per 1,00
Parking Surface Type: Paved

STRUCTURAL DATA:

Year Built: 1985
Yr Renovated: 2005
Building Class: A
Stories: 4
Ceilings: 8'-14'
Construction Type: Glass/Concrete

TAX INCENTIVE ZONES:

TIF District: No
Enterprise Zone: No
Opportunity Zone: No



SALE/LEASE INFORMATION:

Lease Rate: \$20.00 - \$22.00/SF
Lease Type: Full Service

DEMOGRAPHICS:

Traffic Count: 14,500

PROPERTY DESCRIPTION:

Professional Office Building with Office/Retail Space available for Lease. The building is located on the Public Square in Historic Downtown Belleville, directly across from the St. Clair County Courthouse. The Main Floor Lobby Space would be ideal for a Restaurant with views of the Square and Fountain. There is on-site private parking. Ideally located within walking distance to numerous restaurants and shops.

Suite 100: 4,263 SF | Suite 230: 723 SF | Suite 240: 3,500 SF



COMMERCIAL REAL ESTATE SOLUTIONS
1173 Fortune Boulevard Shiloh, IL 62269
618-277-4400 BARBERMURPHY.COM

JOHN EICHENLAUB

Broker Associate
O: (618) 277-4400
C: (618) 570-8344
johne@barbermurphy.com

KATIE BUSH

Broker Associate
O: (618) 277-4400
C: (701) 213-3301
katieb@barbermurphy.com