

FOR SALE

2415 N Illinois
Swansea, IL 62226



OFFICE/RETAIL BUILDING AND WAREHOUSE

BARBERMURPHY
COMMERCIAL REAL ESTATE SOLUTIONS
1173 Fortune Blvd., Shiloh, IL 62269
618.277.4400 BARBERMURPHY.COM

Matt Barriger
Broker Associate
Office: (618) 277-4400 (Ext. 17)
Cell: (618) 973-5507
mattb@barbermurphy.com

LaRae Bigard
Broker Associate
Office: (618) 277-4400 (Ext. 48)
Cell: (618) 553-6340
laraeb@barbermurphy.com



AREA MAP

2415 N Illinois, Swansea, IL 62226



LOCATION OVERVIEW

Located off IL Route 159 (N Illinois St) in a highly visible, highly trafficked location with an ADT of 20,000.

PROPERTY PHOTOS

2415 N Illinois, Swansea, IL 62226

EXTERIOR WAREHOUSE



INTERIOR WAREHOUSE



OFFICE



KITCHENETTE



OFFICE/RETAIL PROPERTY SUMMARY

2415 NORTH ILLINOIS STREET

LISTING # 2936

LOCATION DETAILS:

Parcel #: 08-15.0-101-071
County: IL - St. Clair
Zoning: Commercial - Swansea

PROPERTY OVERVIEW:

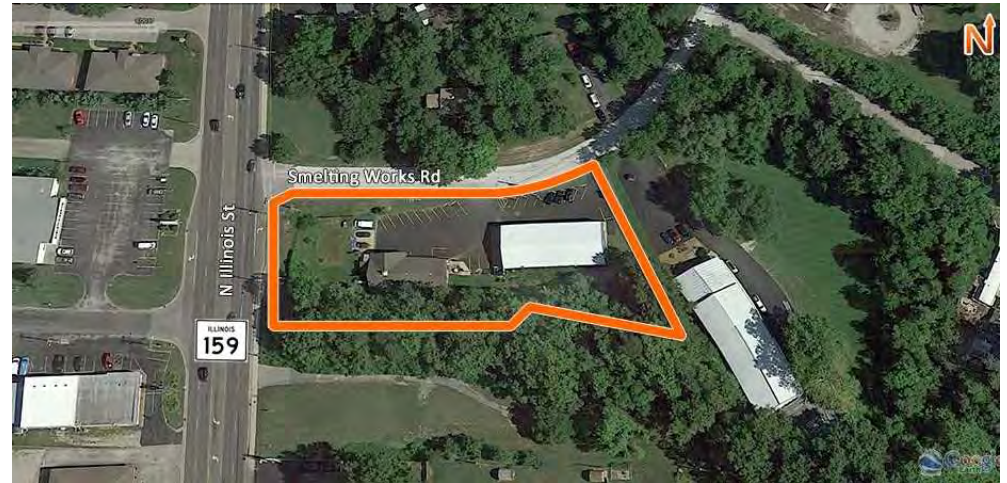
Building SF: 10,416
Vacant SF: 10,416
Min Divisible SF: 2,916
Max Contig SF: 7500
Office SF: 4,916
Signage: Yes
Lot Size: 1.46 Acres
Frontage: 360
Depth: 150
Parking Spaces: 18
Parking Surface Type: Asphalt

STRUCTURAL DATA:

Year Built: 1987
Yr Renovated: 2023
Building Class: B
Ceilings: 16.0000
Construction Type: Brick, Metal

TAX INCENTIVE ZONES:

TIF District: Yes
Enterprise Zone: No
Opportunity Zone: No



SALE/LEASE INFORMATION:

Sale Price: \$450,000
Price / SF: \$43.20

FINANCIAL INFORMATION:

Taxes: \$16,863.88
Tax Year: 2023

DEMOGRAPHICS:

Traffic Count: 20000

PROPERTY DESCRIPTION:

Two Buildings off Route 159 - Warehouse/Retail/Office Space - Warehouse mezzanine suitable for additional office space or storage - High Traffic Count
Building 1- Warehouse: 7,500 SF Total, Warehouse space is 5,500 SF with an additional 2,000 SF of office space
Building 2- Office: 2,916 SF

BARBERMURPHY
COMMERCIAL REAL ESTATE SOLUTIONS
1173 Fortune Boulevard Shiloh, IL 62269
618-277-4400 BARBERMURPHY.COM

MATT BARRIGER
Broker Associate
C: (618) 973-5507
mattb@barbermurphy.com

LARAE BIGARD
Broker Associate
O: (618) 277-4400
C: (618) 604-0250
laraeb@barbermurphy.com