

# 0.93 ACRE LOT FOR SALE

IL Route 15 & Lakewood Place, East St. Louis, IL 62207



**SALE PRICE: \$79,000**

**BARBERMURPHY**

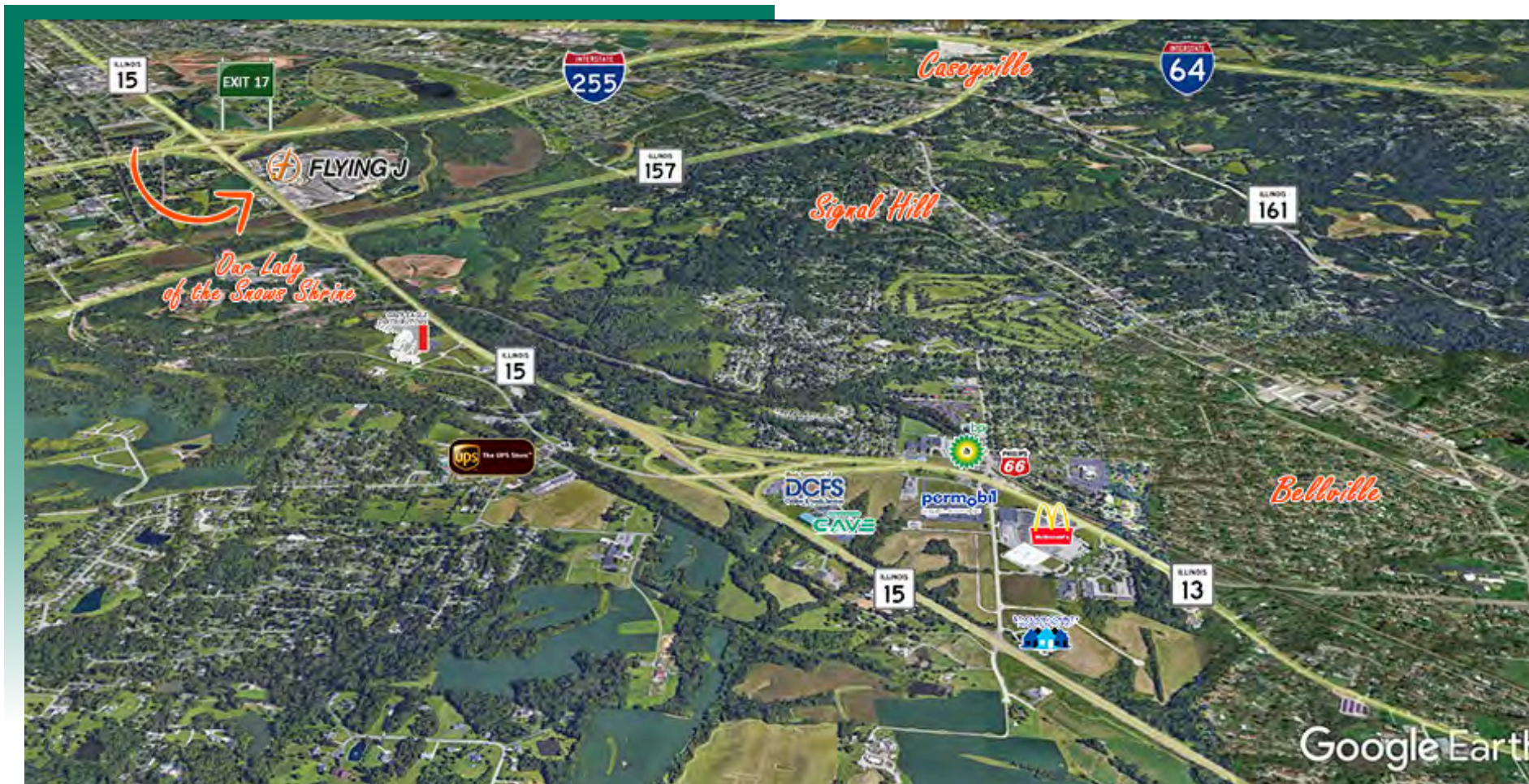
COMMERCIAL REAL ESTATE SOLUTIONS  
1173 Fortune Blvd., Shiloh, IL 62269  
618.277.4400 BARBERMURPHY.COM

**Tony Smallmon**  
Broker Associate  
Cell: (618) 407-4240  
tonys@barbermurphy.com



# AREA MAP

IL Route 15 & Lakewood Place, East St. Louis, IL 62207



## LOCATION OVERVIEW

Located across from the Pilot/Flying J Travel Center on IL Rt 15 and 1/2 mile to IL Rt 15 & I-255 interchanges.



Frontage: 400'



I-255



Utilities On Site

**EXIT**

Exit 17

# PROPERTY PHOTOS

IL Route 15 & Lakewood Place, East St. Louis, IL 62207



Currently rented as a lot for a Billboard with DDI Media.

# LAND PROPERTY SUMMARY

#2926

IL Route 15 & Lakewood Place, East St. Louis, IL 62207

## SALE INFORMATION:

Sale Price: \$79,000  
Sale Price/Acre:  
Sale Price/SF: \$1.95

## LAND MEASUREMENTS:

Acres: AC  
Total Acres Available: AC  
Min Divisible Available: AC  
Frontage: FT  
Depth: FT  
Subdivide Site: YES/NO

## PROPERTY INFORMATION:

Parcel No: 0.93  
County: St. Clair  
Zoning: C-3  
Prior Use: -  
Traffic Count: 30,700  
TIF: No  
Enterprise Zone: No  
Foreign Trade Zone: No  
Survey: No  
Environmental: No  
Archaeological: No  
Property Tax: \$107.78  
Tax Year: 2022  
Topography: Flat



## UTILITY INFORMATION:

Water Provider: IL American  
Location: On Site  
Sewer Provider: Metro East Sanitary  
Location: On Site  
Gas Provider: Ameren IL  
Location: On Site  
Electric Provider: Ameren IL  
Location: On Site

## TRANSPORTATION:

Interstate: I-255  
Rail: N/A  
Barge: N/A  
Airport: N/A

## COMMENTS:

For Sale .93 Acres of land at signalized light near IL Rt 15 and I-255. Currently rented as a lot for a Billboard with DDI Media. Traffic count of 30,700 vehicles a day average.



**Tony Smallmon**  
Broker Associate  
Office: (618) 277-4400 (Ext. 18)  
Cell: (618) 407-4240  
tonys@barbermurphy.com