

0.48 ACRE DEVELOPMENT SITE

18 Ashland Ave. Fairview Heights, IL 62208



REDUCED SALE PRICE: \$35,000

BARBERMURPHY

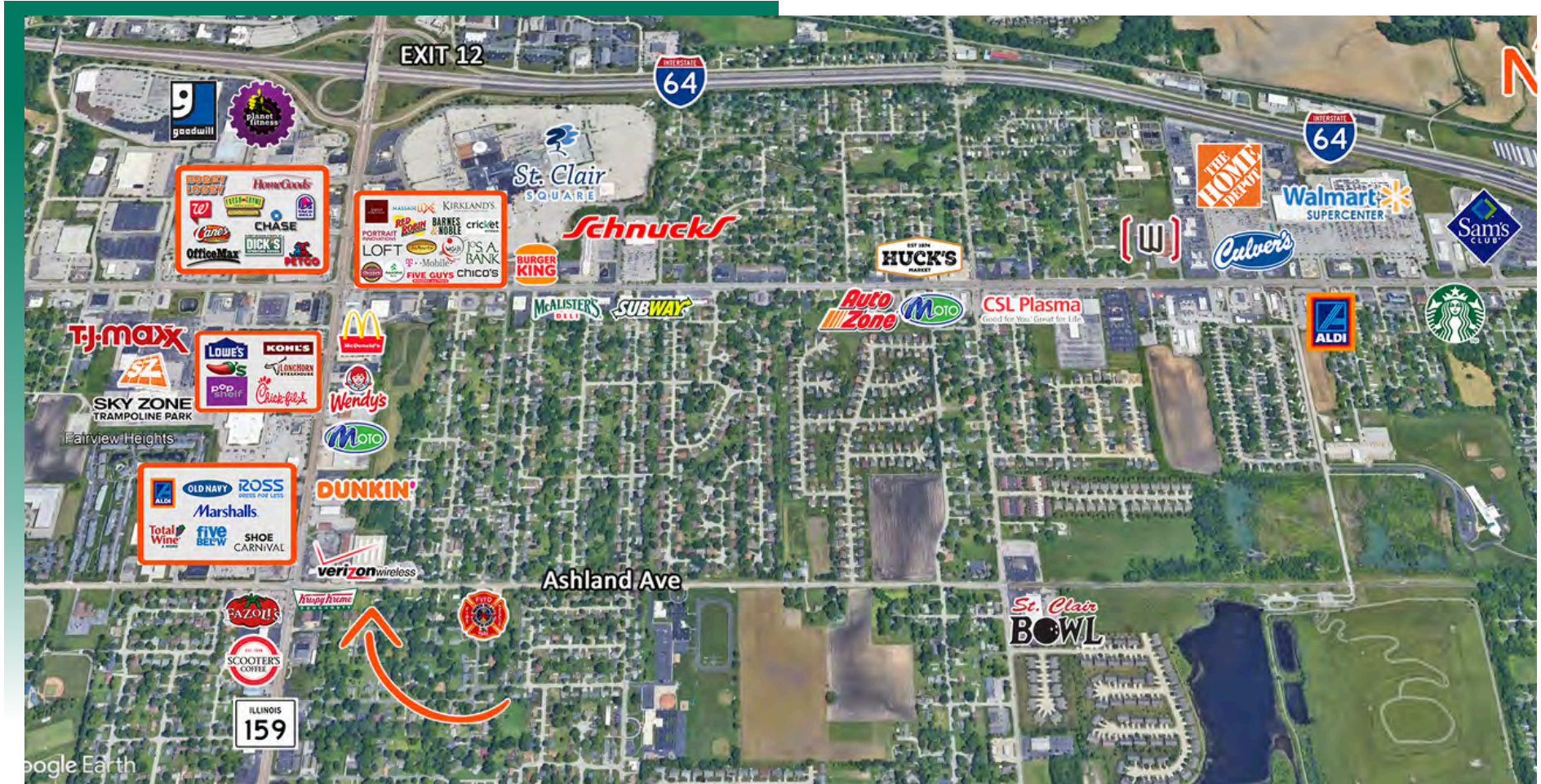
COMMERCIAL REAL ESTATE SOLUTIONS
1173 Fortune Blvd., Shiloh, IL 62269
618.277.4400 BARBERMURPHY.COM

LaRae Bigard
Broker Associate
Cell: (618) 553-6340
laraeb@barbermurphy.com



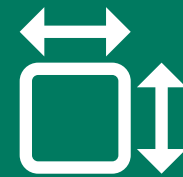
AREA MAP

18 Ashland Ave. Fairview Heights, IL 62208



LOCATION OVERVIEW

Situated just off of bustling North Illinois St., 18 Ashland Ave. offers a prime location with daily traffic flow of over 25,000 cars. Located directly behind Krispy Kreme, this parcel of land holds promise for an exceptional development opportunity in the heart of Fairview Heights. Other area businesses include Fazoli's, Scooter's Coffee, Panera Bread, and Dunkin Donuts.



Frontage:115'
Depth:130'



1 Mile to
I-64

LAND PROPERTY SUMMARY

#2909

18 Ashland Ave. Fairview Heights, IL 62208

SALE INFORMATION:

Sale Price: \$35,000
Sale Price/Acre: -
Sale Price/SF: \$1.67

LAND MEASUREMENTS:

Acres: 0.48 AC
Total Acres Available: 0.48 AC
Min Divisible Available: 0.48 AC
Frontage: 115 FT
Depth: 130 FT
Subdivide Site: NO

PROPERTY INFORMATION:

Parcel No: 03-34.0-100-079
County: St. Clair
Zoning: B-1
Prior Use: Land
Traffic Count: -
TIF: NO
Enterprise Zone: NO
Foreign Trade Zone: NO
Survey: NO
Environmental: NO
Archaeological: NO
Property Tax: \$419.56
Tax Year: 2022
Topography: -



TRANSPORTATION:

Interstate: 1 Mile to I-64
Rail: N/A
Barge: N/A
Airport: 20 Miles to St. Louis Int Airport



LaRae Bigard
Broker Associate
Office: (618) 277-4400 (Ext. 48)
Cell: (618) 553-6340
laraeb@barbermurphy.com