

LAND FOR SALE

9678 Holy Cross Lane, Breese, IL 62230



10.27 ACRE DEVELOPMENT SITE

BARBERMURPHY

COMMERCIAL REAL ESTATE SOLUTIONS
1173 Fortune Blvd., Shiloh, IL 62269
618.277.4400 BARBERMURPHY.COM

Scott Muentnich
Broker Associate
Cell: (618) 975-0504
scottm@barbermurphy.com

Steve Zuber - CCIM, SIOR
Principal
Cell: (314) 409-7283
steve@barbermurphy.com



Marc Brash
Vice President | Corporate Solutions
Cell: (773) 513-9687
marc.brash@colliers.com
71 S Wacker Drive | Suite 3700
Chicago, IL 60606

AREA MAP

9678 HOLY CROSS LANE, BREESE, IL 62230



PROPERTY OVERVIEW

Located directly off of Highway 50 at the Breese interchange. 550 +/- LF of Highway frontage with excellent visibility. Site is directly across from Breese hospital and adjoins new auto dealership. Incentive and TIF programs are available. All utilities to the site. Excellent hotel site, senior living or large retail.



Frontage: 550'
Depth: 930'



Highway 50



MidAmerica Airport
26 miles

EXIT

Breese Exit

LAND PROPERTY SUMMARY

9678 HOLY CROSS LANE, BREESE, IL 62230

#2769

SALE INFORMATION:

Sale Price: \$1,350,000
Sale Price/Acre: \$131,450.83/AC
Sale Price/SF: \$3.02/SF

LEASE INFORMATION:

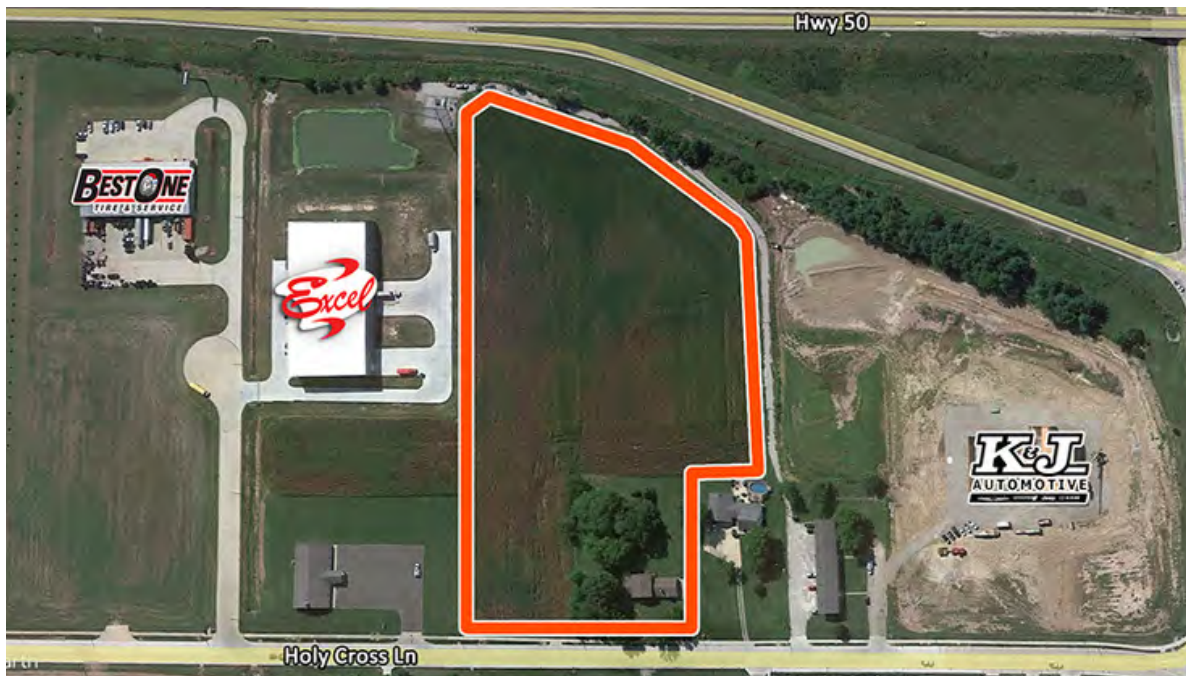
For Lease: NO
Lease Rate:
Lease Terms:

LAND MEASUREMENTS:

Acres: 10.27 AC
Total Acres Available: 10.27 AC
Min Divisible Available: 10.27 AC
Frontage: 550 FT
Depth: 930 FT
Subdivide Site: NO

PROPERTY INFORMATION:

Parcel No: 06-06-15-201-018/009
County: IL- Clinton
Zoning: C-1 Highway Commercial
Prior Use: Agricultural
Traffic Count: 3,000 ADT
TIF: YES
ENTERPRISE Zone: NO
Foreign Trade Zone: NO
Survey: NO
Environmental: NO
Archaeological: NO
Property Tax: \$221.00
Tax Year: 2022
Topography: Flat



UTILITY INFORMATION:

Water Provider: City Served
Location: On Site
Sewer Provider: City Served
Location: On Site
Gas Provider: City of Breese
Location: On Site
Electric Provider: City of Breese
Location: On Site

TRANSPORTATION:

Highway: Highway 50
Rail: NA
Barge: NA
Airport: MidAmerica Airport
(26 Miles)

Scott Muentnich
Broker Associate
Office: (618) 277-4400 (Ext. 40)
Cell: (618) 975-0504
scottm@barbermurphy.com

Steve Zuber - CCIM, SIOR
Principal
Office: (618) 277-4400 (Ext. 13)
Cell: (314) 409-7283
steve@barbermurphy.com

Marc Brash
Vice President | Corporate Solutions
Cell: (773) 513-9687
marc.brash@colliers.com
71 S Wacker Drive | Suite 3700
Chicago, IL 60606