

# FOR LEASE

3675 Nameoki Rd.  
Granite City, IL 62040



**3,500 - 14,500 CONTIGUOUS SF AVAILABLE**

**BARBERMURPHY**  
COMMERCIAL REAL ESTATE SOLUTIONS  
1173 Fortune Blvd., Shiloh, IL 62269  
618.277.4400 BARBERMURPHY.COM

**John L. Eichenlaub**  
Managing Broker  
Office: (618) 277-4400 (Ext. 15)  
Cell: (618) 570-8344  
johne@barbermurphy.com



Information herein is not warranted and subject to change without notice. We assume no liability on items included in quoted price. Broker makes no representation as to the environmental condition of the offered property and recommends Purchaser's/Lessee's independent investigation.



## AREA MAP

3675 Nameoki Rd., Granite City, IL



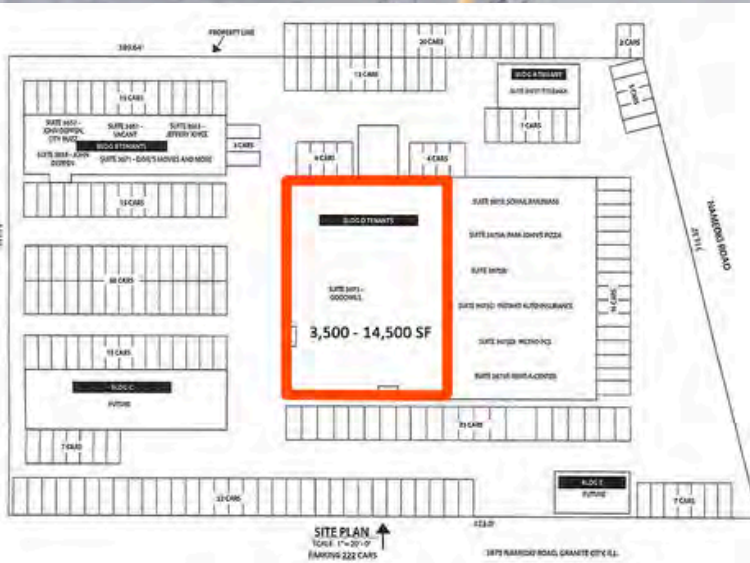
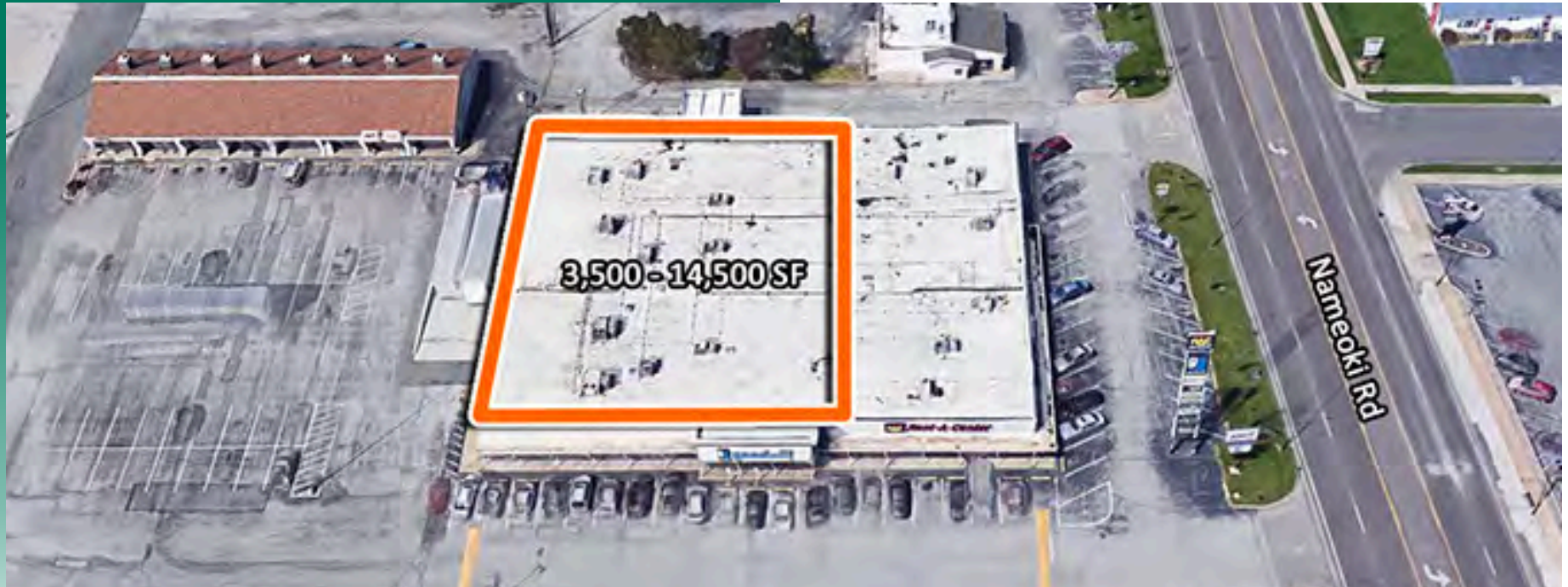
### LOCATION OVERVIEW

High visibility, high traffic location. Retail Center currently home to Rent a Center, Metro PCS, Papa Johns and more



# FLOOR PLAN

3675 Nameoki Rd., Granite City, IL



\*Not to scale

**LEASE RATE:  
\$10-\$13/SF, NNN**

## OFFICE/RETAIL SUMMARY

3675 NAMEOKI ROAD

**LISTING #** 2674

### LOCATION DETAILS:

Parcel # 25,696  
County: Madison  
Zoning: C-5 - Granite city

### PROPERTY OVERVIEW:

Building SF: 25,696  
Vacant SF: 14,500  
Usable Sqft: 14,500  
Min Divisible SF: 3,500  
Max Contig SF: 14,500  
Office SF: 14,500  
Retail SF: 14,500  
Signage: Building, Marquee  
Lot Size: 1.41 Acres  
Parking Surface Type: Asphalt

### STRUCTURAL DATA:

Year Built: 1965  
Renovated: 2025  
Ceilings: 10'



### LEASE INFORMATION:

Lease Rate: \$10.00 - \$13.00 / SF  
Lease Type: NNN  
NNN Expenses: \$3.30

### FINANCIAL INFORMATION:

Taxes: -  
Tax Year: -

### DEMOGRAPHICS:

Traffic Count: 14,200

### PROPERTY DESCRIPTION:

3500-14300 sf available. retail plaza on Nameoki rd, High visibility, High traffic. located in a heavy retail area. Formerly Goodwill