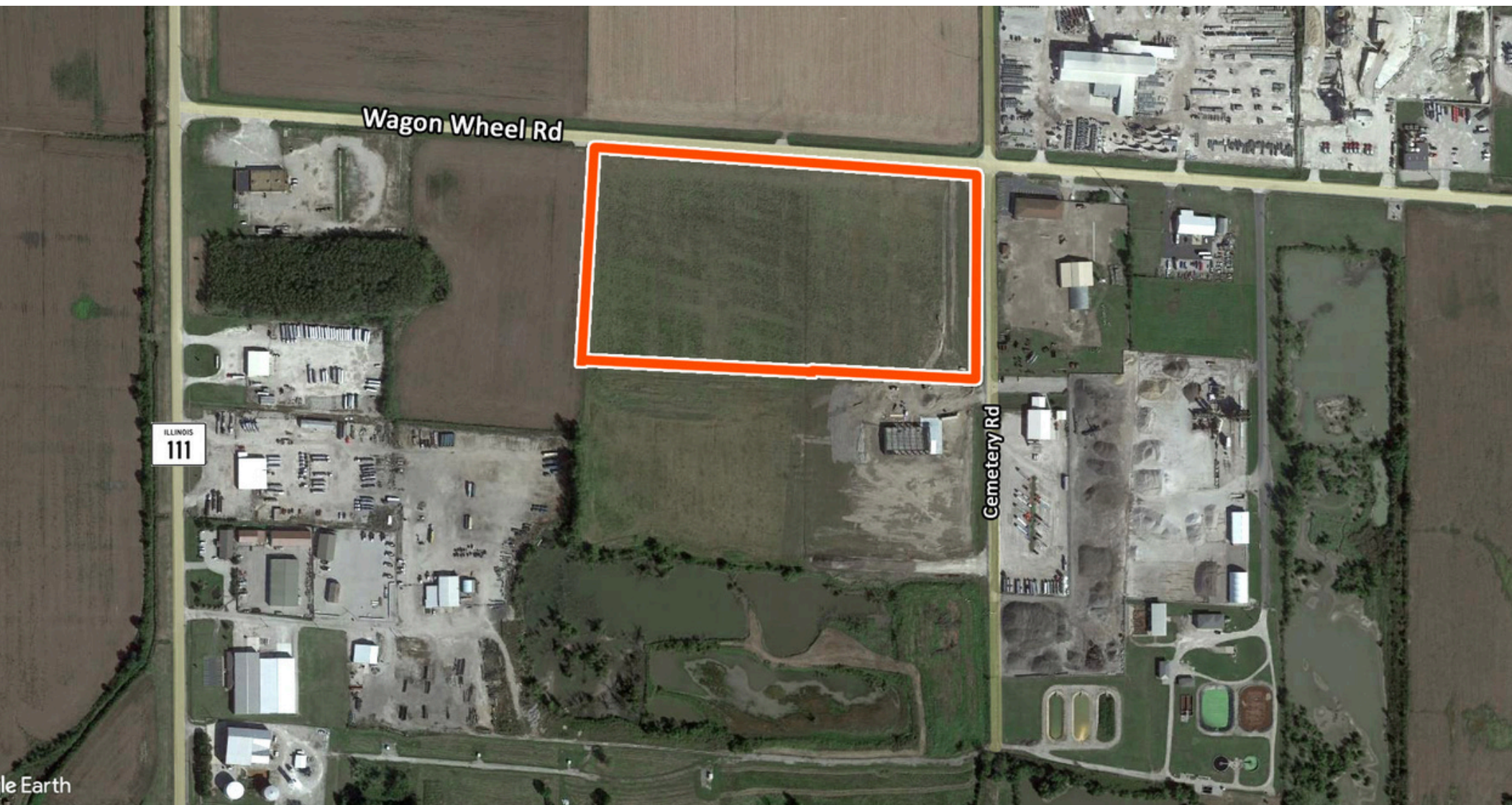


# 21 ACRE INDUSTRIAL SITE FOR SALE - WILL DIVIDE

4135 Cemetery Rd, Roxana, IL 62084



**BARBERMURPHY**  
COMMERCIAL REAL ESTATE SOLUTIONS  
1173 Fortune Blvd., Shiloh, IL 62269  
618.277.4400 BARBERMURPHY.COM

**Steve Zuber - CCIM, SIOR**  
Principal  
Office: (618) 277-4400 (Ext. 13)  
Cell: (314) 409-7283  
steve@barbermurphy.com

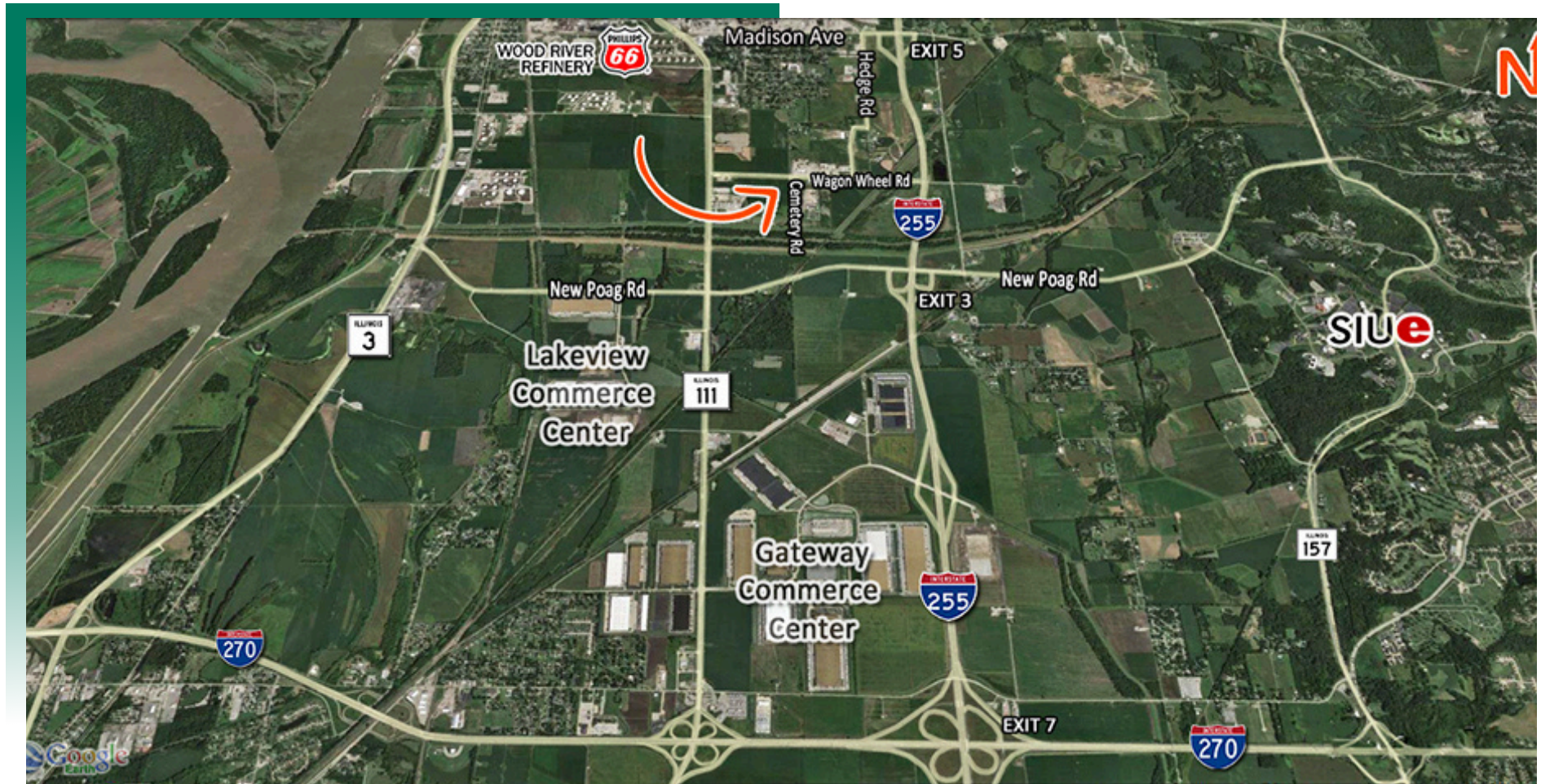


Information herein is not warranted and subject to change without notice. We assume no liability on items included in quoted price. Broker makes no representation as to the environmental condition of the offered property and recommends Purchaser's/Lessee's independent investigation.



# AREA MAP

4135 Cemetery Rd., Roxana, IL 62084



## LOCATION OVERVIEW

Located off Wagon Wheel Road 1 Mile N. East to I-255 Interchange; 1/2 Mile West to IL Route 111 in South Roxanna.



FRONTAGE: 1,300'  
DEPTH: 665'



I-255 & I-270



ST. LOUIS  
REGIONAL AIRPORT  
8 MILES

**EXIT**

EXIT 5 (I-255)  
EXIT 7 (I-270)

# LAND PROPERTY SUMMARY

4135 CEMETERY ROAD

**LISTING #** 2575

## LOCATION DETAILS:

**Parcel #:** 18-1-14-11-00-000-008  
**County:** IL - Madison  
**Zoning:** Industrial - City of South Rox

## PROPERTY OVERVIEW:

**Lot Size:** 21.0 Acres  
**Min Divisible Acres:** 3  
**Max Contig Acres:** 21  
**Frontage:** 1300  
**Depth:** 665  
**Topography:** Level  
**Archeological:** No  
**Environmental:** No  
**Survey:** No

## TAX INCENTIVE ZONES:

**TIF District:** Yes  
**Enterprise Zone:** No  
**Opportunity Zone:** No  
**Foreign Trade Zone:** No

## TRANSPORTATION:

**Interstate Access:** 2 Miles to I-255  
**Airport Access:** 8 Mile to St. Louis Regional Airport

## DEMOGRAPHICS/FINANCIAL INFO:

**Traffic Count:** 5,200 on Route 111



## SALE INFORMATION:

**Price / Acre:** \$45,000  
**\$/SF (Land):** \$1.03

## UTILITY INFO:

**Water Provider:** Village of Roxana  
**Water Location:** On Site  
**Sewer Provider:** Village of Roxana  
**Sewer Location:** On Site  
**Gas Provider:** Ameren IL  
**Gas Location:** On Site  
**Electric Provider:** Ameren IL  
**Electric Location:** On Site

## PROPERTY DESCRIPTION:

21 acres zoned industrial. All utilities available. Metal buildings and rocked lots with outdoor storage are permitted. Owner will subdivide sites down to 3 acre tracts. Build to suit options available. Contact broker for pricing.