

Office Building for Sale

607 North Sparta, Steeleville, IL 62288



- 4,137 SF Medical Office Building – 2,061 SF on Main Level
- Reception Area, 6 Exam Rooms, 2 Private Offices, Conference Room and Break Room
- Built in 2005 - New Parking Lot and Roof in 2020

SALE PRICE: \$199,000

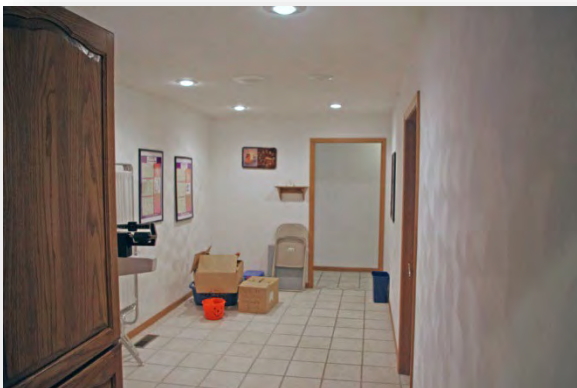
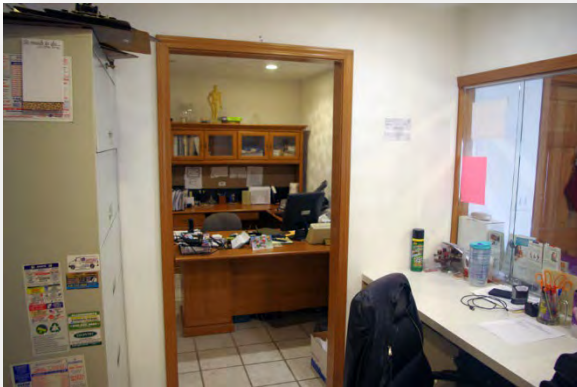
BARBERMURPHY

COMMERCIAL REAL ESTATE SOLUTIONS
1173 Fortune Blvd. Shiloh, IL 62269
618.277.4400 barbermurphy.com

Steve Zuber – SIOR, CCIM
C: 314.409.7283
Steve@barbermurphy.com

Cole Hensel
C: 618.606.2646
ColeH@barbermurphy.com





Listing No: 1455
Office / Medical

Total SF Available: 4,137 SF
Min Divisible SF: 4,137 SF

607 N Sparta
 Steeleville, IL 62288

SQUARE FOOT INFO:

Building Total: 4,137 SF
Total Available: 4,137 SF
Direct Lease: 0 SF
Sublease: 0 SF
Office: 4,137 SF
Retail: 0 SF
Min Divisible: 4,137 SF
Max Contiguous: 4,137 SF

SALE INFORMATION:

For Sale: Yes
Sale Price: \$199,000
Sale Price/SF: \$48.10
CAP Rate:
GRM:
NOI:

LAND MEASUREMENTS:

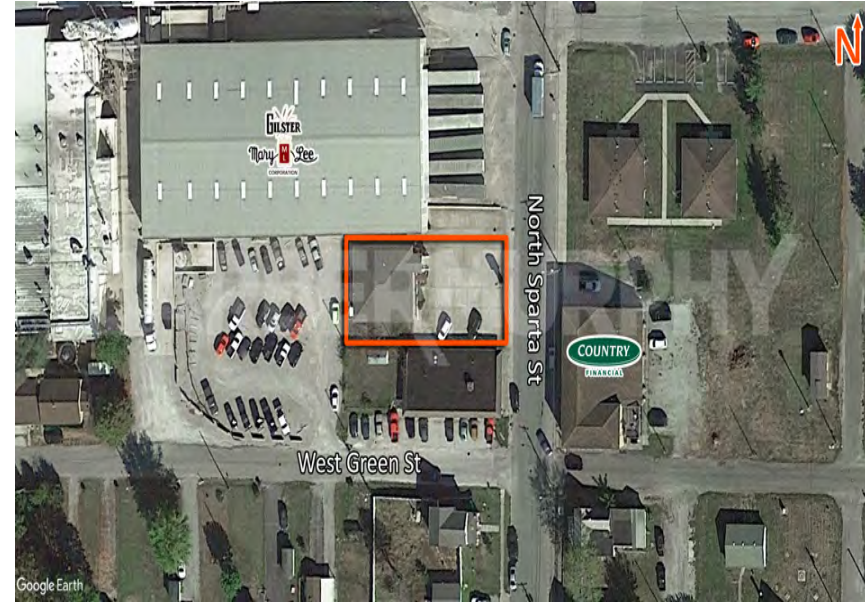
Acres: 0.25
Frontage: 71 FT
Depth: 137 FT

LEASE INFORMATION:

For Lease: No
Lease Rate:
Lease Type:
Net Charges:
CAM Charges:
Lease Term:

PROPERTY INFORMATION:

Parcel No: 17020-010-00	TIF: Yes	Parking:	
County: Randolph	Enterprise Zone: No	Surface Type:	Concrete
Zoning: Multifamily/Commercial	Survey: No	Traffic Count:	3,500
Zoning By: City	Environmental: No	Property Tax:	\$4,704.46
Complex:	Archaeological: No	Tax Year:	2020
Prior Use:			



Leasing Comments:

STRUCTURAL DATA:

Year Built: 2005	Clearance Min:	Exterior: Brick
Rehab Year:	Clearance Max:	Bay Spacing:
Floors:	Floor Drains:	Sprinklers: No
Class:		

Comments

New roof and parking lot in 2020, Built in 2005

4,137 SF Medical Office (2,061 SF on first floor), 3,500 cars per day

Listing Broker(s)

Steve Zuber SIOR, CCIM Office: (618) 277-4400 steve@barbermurphy.com Cell: (314) 409-7283	Cole Hensel Office: (618) 277-4400 coleh@barbermurphy.com Cell: 618-606-2646
--	---