

Office Building for Sale

607 North Sparta, Steeleville, IL 62288



- 4,137 SF Medical Office Building – 2,061 SF on Main Level
- Reception Area, 6 Exam Rooms, 2 Private Offices, Conference Room and Break Room
- Built in 2005 - New Parking Lot and Roof in 2020

SALE PRICE: \$199,000

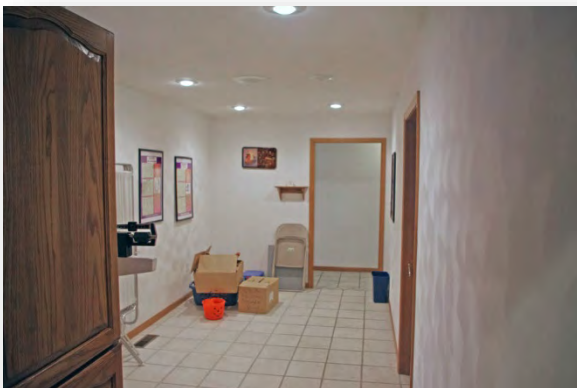
BARBERMURPHY

COMMERCIAL REAL ESTATE SOLUTIONS
1173 Fortune Blvd. Shiloh, IL 62269
618.277.4400 barbermurphy.com

Steve Zuber – SIOR, CCIM
C: 314.409.7283
Steve@barbermurphy.com

James Leopold – CCIM, SIOR
C: 618.581.1702
JamesL@barbermurphy.com





Listing No: 1455

Office / Medical

607 N Sparta
Steeleville, IL 62288

SALE INFORMATION:

For Sale: Yes
Sale Price: \$199,000
Sale Price/SF: \$48.10
CAP Rate:
GRM:
NOI:

LEASE INFORMATION:

For Lease: No
Lease Rate:
Lease Type:
Net Charges:
CAM Charges:
Lease Term:

Leasing Comments:

Comments

New roof and parking lot in 2020, Built in 2005

4,137 SF Medical Office (2,061 SF on first floor), 3,500 cars per day

Total SF Available: 4,137 SF
Min Divisible SF: 4,137 SF

SQUARE FOOT INFO:

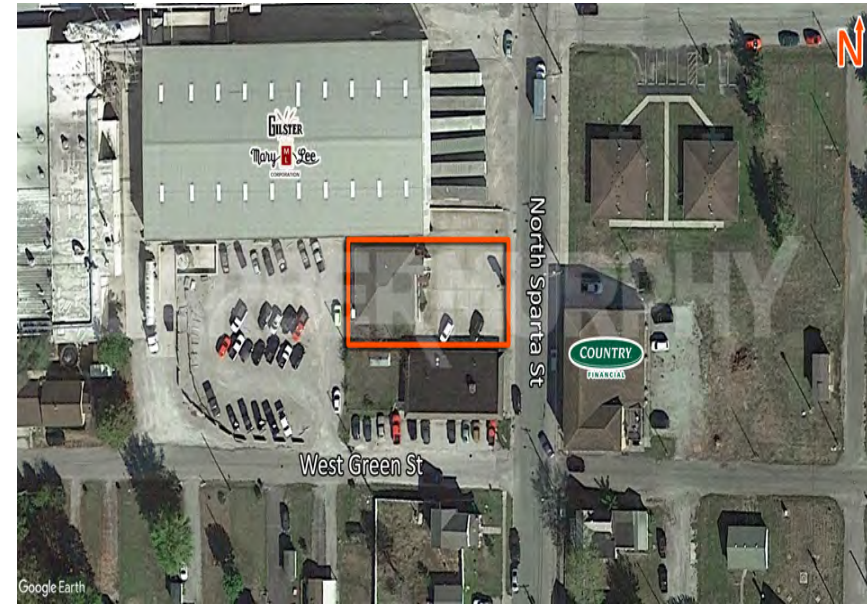
Building Total: 4,137 SF
Total Available: 4,137 SF
Direct Lease: 0 SF
Sublease: 0 SF
Office: 4,137 SF
Retail: 0 SF
Min Divisible: 4,137 SF
Max Contiguous: 4,137 SF

LAND MEASUREMENTS:

Acres: 0.25
Frontage: 71 FT
Depth: 137 FT

PROPERTY INFORMATION:

Parcel No: 17020-010-00	TIF: Yes	Parking:	
County: Randolph	Enterprise Zone: No	Surface Type:	Concrete
Zoning: Multifamily/Commercial	Survey: No	Traffic Count:	3,500
Zoning By: City	Environmental: No	Property Tax:	\$4,704.46
Complex:	Archaeological: No	Tax Year:	2020
Prior Use:			



STRUCTURAL DATA:

Year Built: 2005	Clearance Min:	Exterior: Brick
Rehab Year:	Clearance Max:	Bay Spacing:
Floors:	Floor Drains:	Sprinklers: No
Class:		

Listing Broker(s)

Steve Zuber SIOR, CCIM Office: (618) 277-4400 steve@barbermurphy.com Cell: (314) 409-7283	James Leopold CCIM, SIOR Office: (618) 277-4400 jamesl@barbermurphy.com Cell: 618-581-1702
--	---