

1 OVERALL BUILDING LAYOUT
SCALE: 1/8" = 1'-0"

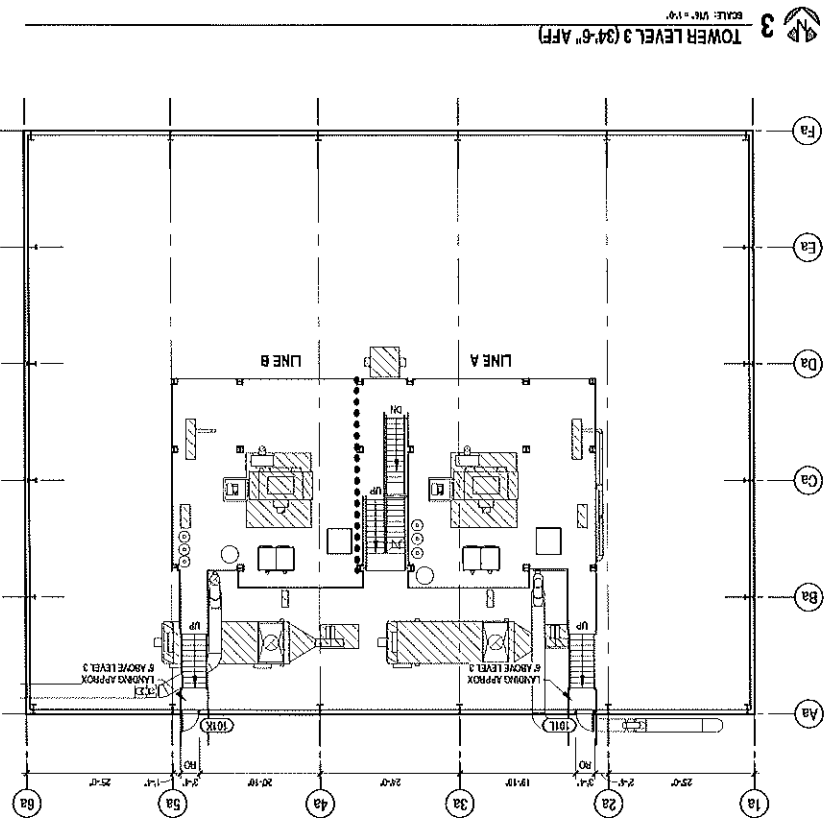
DATE: 2/28/11-06-02	REVISION: 1
DESIGNED BY: JCT	APPROVED BY: JCT
DRAWN BY: JCT	CHECKED BY: JCT
SCALE: 1/8" = 1'-0"	PROJECT NO: 240211
SHEET NO: A1.1	TOTAL SHEETS: 1

OVERALL BUILDING LAYOUT	
ISSUED FOR BID	

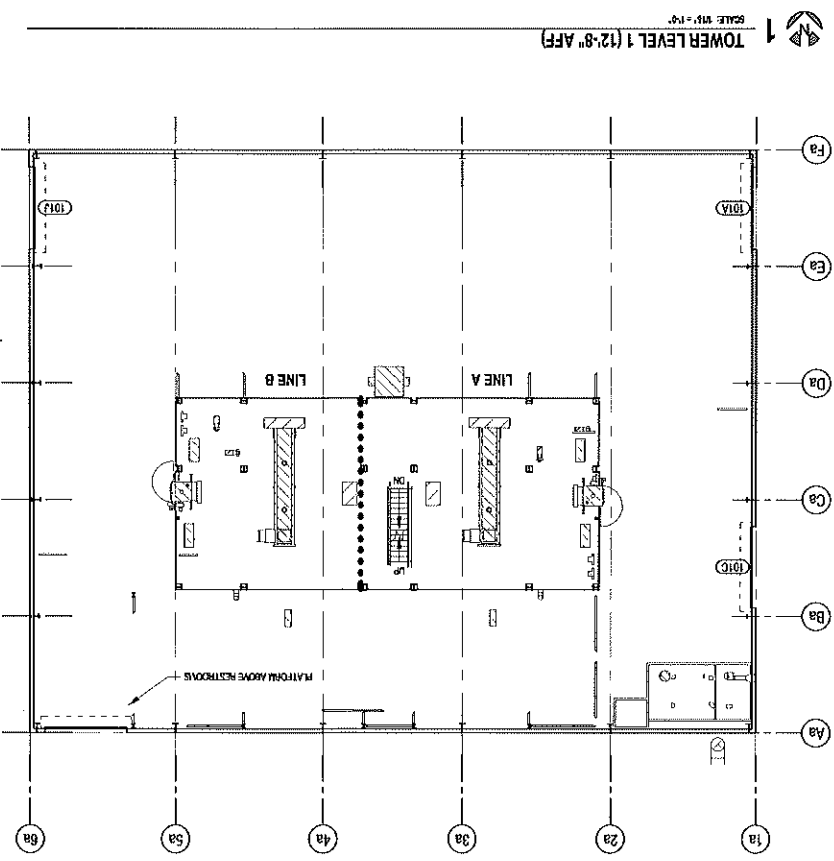
NO.	REVISIONS	DATE
1	Revision 1 Building Modifications	2/28/11

SOUTHERN PRECISION SANDS
NEW COATING FACILITY
VOCA, TEXAS

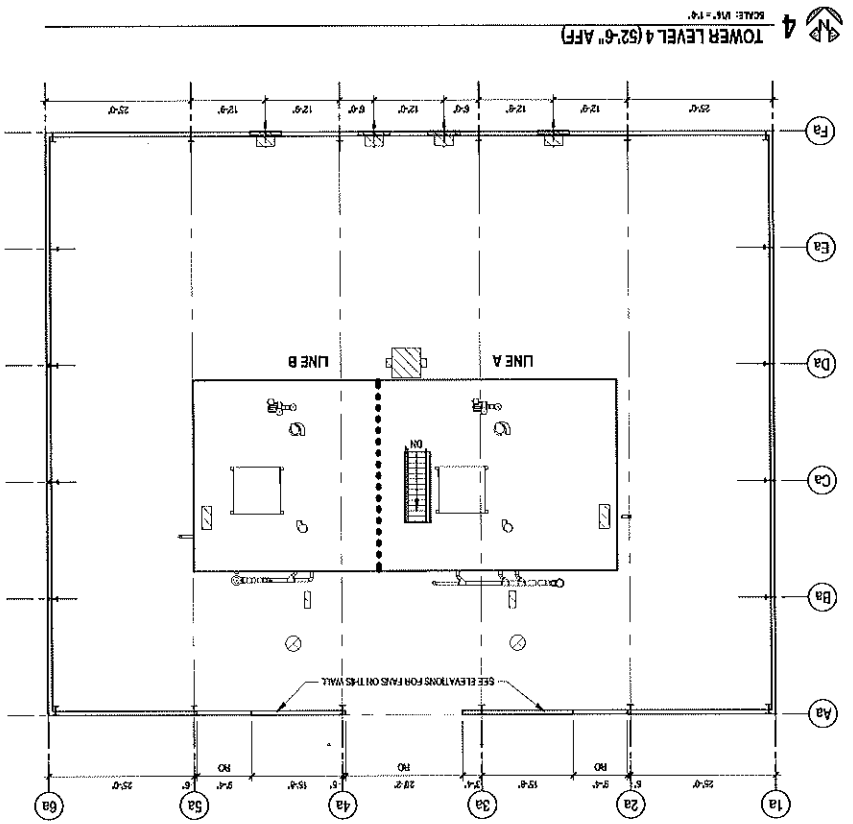
JOHNSON & PACE
INCORPORATED
ENGINEERING • ARCHITECTURE • SURVEYING
1331 HWY 100, BOX 101, WHITE OAK, TX 75781
PH: 281.296.7300 FAX: 281.296.7303
www.johnsonandpace.com



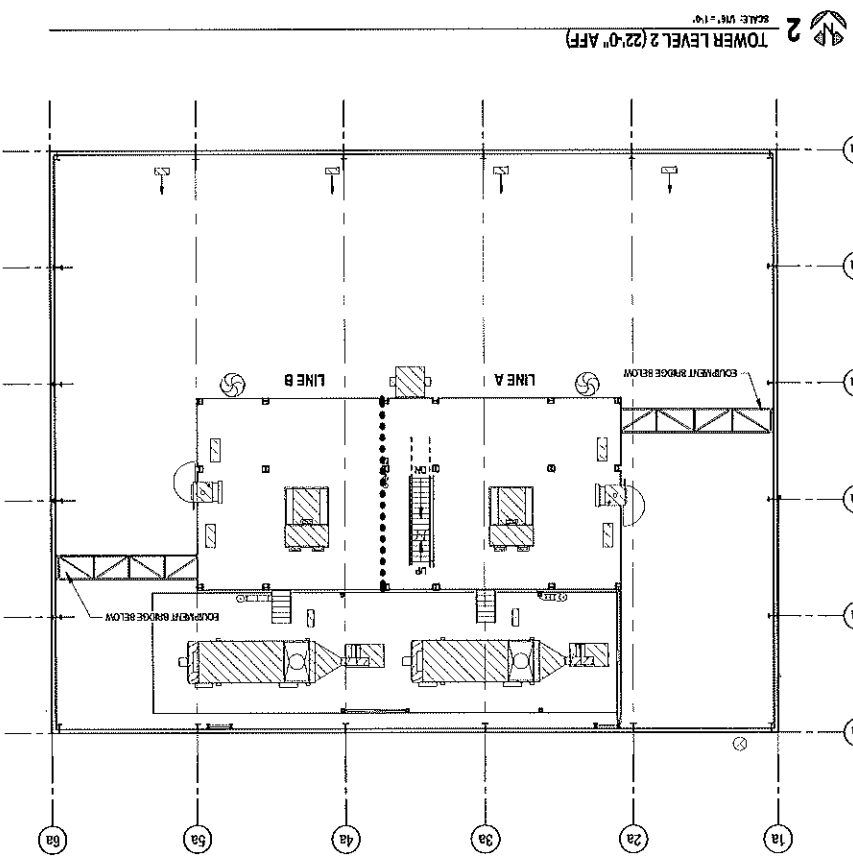
3 TOWER LEVEL 3 (34'-6" AFF)
SCALE: 1/8" = 1'-0"



1 TOWER LEVEL 1 (12'-8" AFF)
SCALE: 1/8" = 1'-0"



4 TOWER LEVEL 4 (52'-6" AFF)
SCALE: 1/8" = 1'-0"



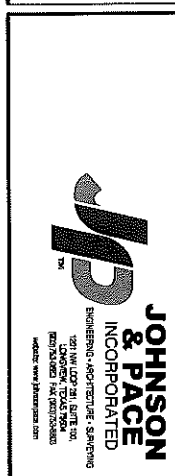
2 TOWER LEVEL 2 (22'-0" AFF)
SCALE: 1/8" = 1'-0"

DATE PLOTTED: 2/26/11 10:08:02	SCALE: 1/8" = 1'-0"
DRAWING NO: 200211-115127	PROJECT: ISSUED FOR BID
SHEET NO: A2.2	REVISIONS:

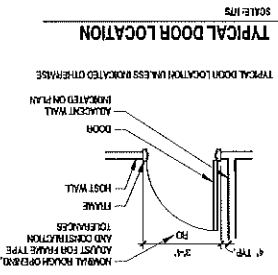
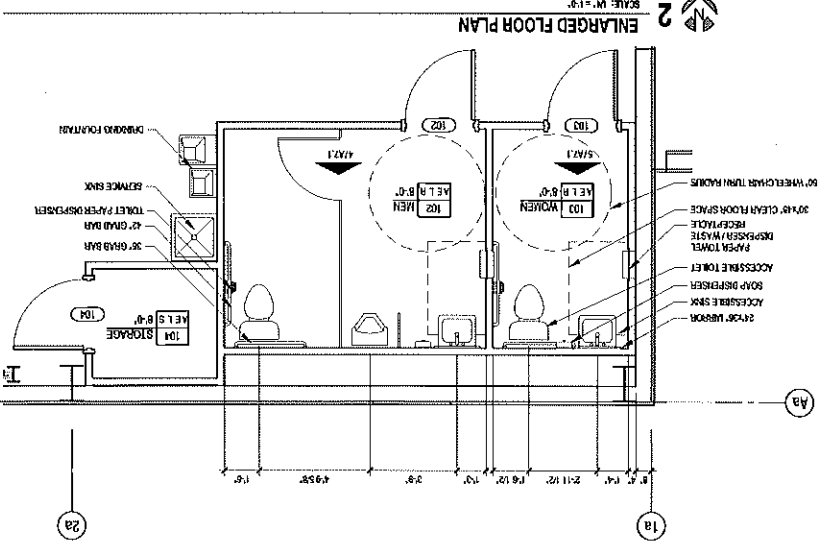
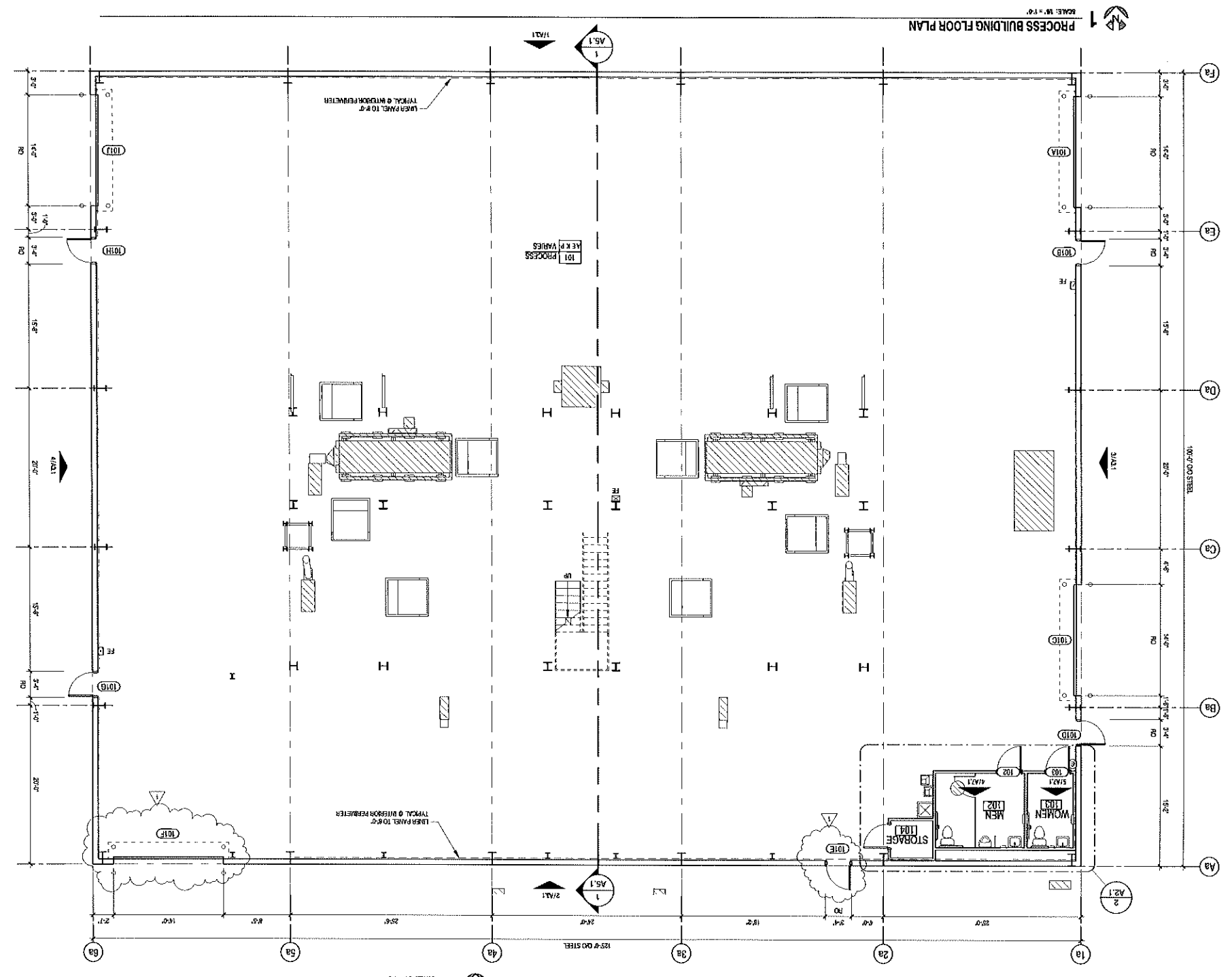
PROCESS BUILDING TOWER PLANS
ISSUED FOR BID

NO.	DESCRIPTION	BY	DATE

**SOUTHERN PRECISION SANDS
NEW COATING FACILITY
VOCA, TEXAS**



This drawing is not to be used for construction without the approval of the architect. The architect shall be responsible for the accuracy of the information provided herein and shall not be responsible for any errors or omissions. The architect shall not be responsible for any construction methods or materials used in the construction of the building. The architect shall not be responsible for any construction methods or materials used in the construction of the building.



- ROOM FINISH KEY**
- 101 ROOM NUMBER
 - 102 ROOM NAME
 - 103 ROOM NAME
 - 104 ROOM NAME
 - 105 ROOM NAME
 - 106 ROOM NAME
 - 107 ROOM NAME
 - 108 ROOM NAME
 - 109 ROOM NAME
 - 110 ROOM NAME
 - 111 ROOM NAME
 - 112 ROOM NAME
 - 113 ROOM NAME
 - 114 ROOM NAME
 - 115 ROOM NAME
 - 116 ROOM NAME
 - 117 ROOM NAME
 - 118 ROOM NAME
 - 119 ROOM NAME
 - 120 ROOM NAME

- GENERAL NOTES**
1. ROOF SHALL HAVE NOT LESS THAN R-20 WITH AN EXPOSED, FACED, & BANDED SYSTEM.
 2. WALLS SHALL HAVE NOT LESS THAN R-13 WITH AN EXPOSED, FACED, & BANDED ENERGY SAVING SYSTEM.
 3. FLOOR PANELS SHALL BE 7/8" PANEL, 25-gauge ALUMINUM WITH STAIRWELL FACTORY FINISH.
 4. WALL PANELS SHALL BE 7/8" PANEL, 25-gauge ALUMINUM WITH STAIRWELL FACTORY FINISH.
 5. WALL PANELS SHALL BE 7/8" PANEL, 25-gauge ALUMINUM WITH STAIRWELL FACTORY FINISH OR COLORED FINISH (SEE PLAN).
 6. P.E.M. SUPPLIER SHALL PROVIDE ALL FLASHINGS AND MATCH WALL PANELS.
 7. P.E.M. SUPPLIER SHALL PROVIDE OUTTERS AND FLASHINGS AS SHOWN ON DIMENSIONS. FINISH TO MATCH WALL PANELS.
 8. P.E.M. SUPPLIER SHALL PROVIDE ALL FLASHINGS AND MATCH WALL PANELS.
 9. DIMENSIONS SHOWN ARE FROM BUILDING LINE, TO FACE OF STUD WALL FRAME, TO EDGES OF ROUGH OPENINGS, TO CENTERLINE OF FIXTURES UNLESS INDICATED OTHERWISE.

- REVISIONS**
- | NO. | DATE | DESCRIPTION |
|-----|-----------|---------------------------------|
| 1 | 2/14/2011 | Revised 1 Building Modification |

PROJECT NO.	25091-1-006-02
CLIENT	JOHNSON & PACE
SCALE	AS INDICATED
REVISIONS	1

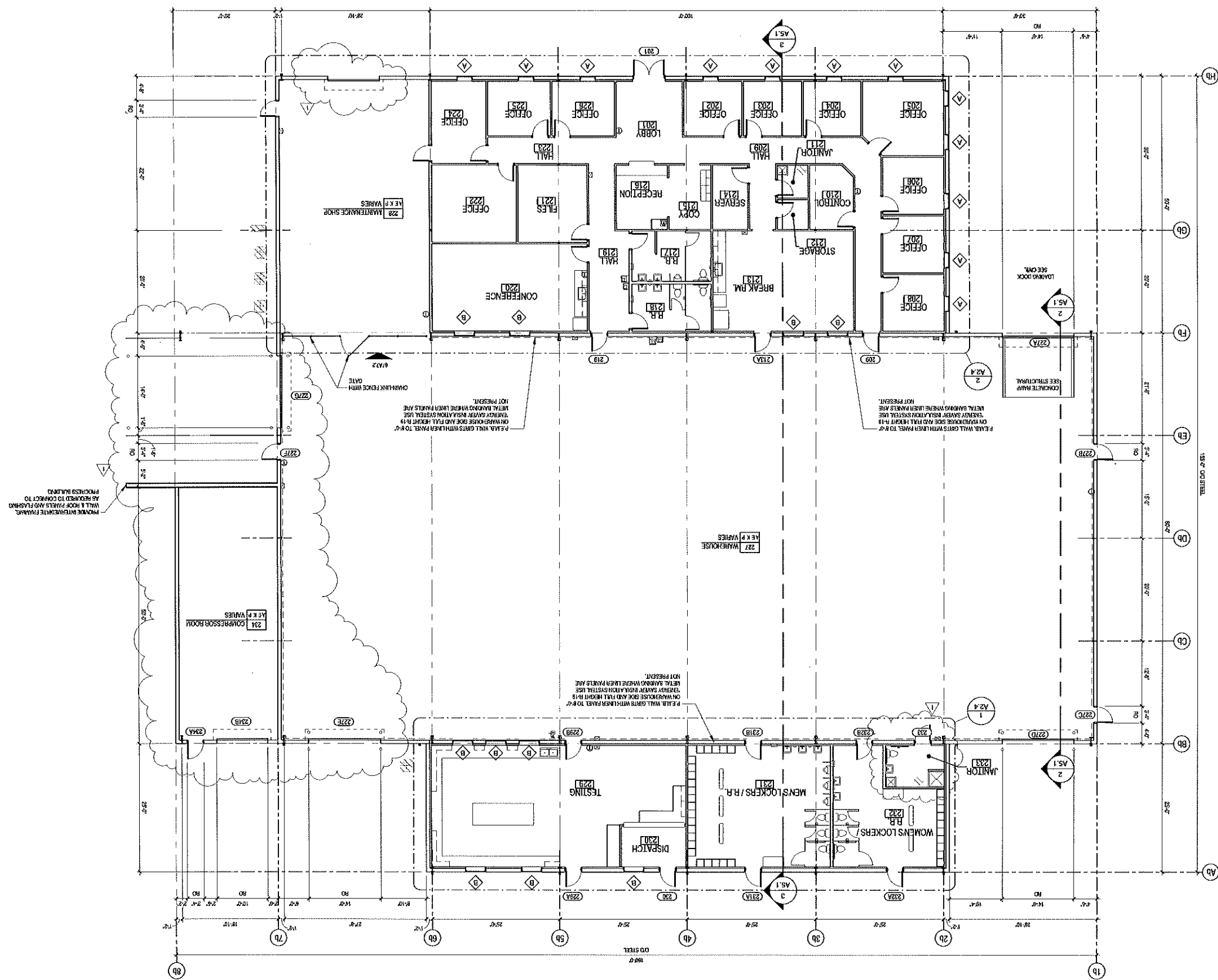
PROCESS BUILDING FLOOR PLAN
ISSUED FOR BID

NO.	DATE	DESCRIPTION
1	2/14/2011	Revised 1 Building Modification

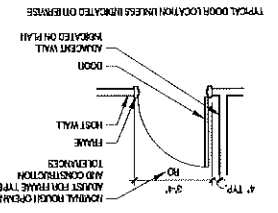
SOUTHERN PRECISION SANDS
NEW COATING FACILITY
VOCA, TEXAS

JOHNSON & PACE
INCORPORATED
ARCHITECTURAL ARCHITECTURE-ENGINEERING
10000 W. HIGHTWAY 170
SUITE 100
DALLAS, TEXAS 75243
PHONE: 972.382.1000
WWW.JOHNSONANDPACE.COM

4 WAREHOUSE BUILDING FLOOR PLAN
SCALE: 3/8" = 1'-0"



TYPICAL DOOR LOCATION
SCALE: NTS



ROOM FINISH KEY

101	ROOM NAME
102	ROOM HEIGHT
103	CEILING
104	WALL
105	FLOOR
106	WALL ON BASE
107	WALL ON BASE
108	WALL ON BASE
109	WALL ON BASE
110	WALL ON BASE
111	WALL ON BASE
112	WALL ON BASE
113	WALL ON BASE
114	WALL ON BASE
115	WALL ON BASE
116	WALL ON BASE
117	WALL ON BASE
118	WALL ON BASE
119	WALL ON BASE
120	WALL ON BASE
121	WALL ON BASE
122	WALL ON BASE
123	WALL ON BASE
124	WALL ON BASE
125	WALL ON BASE
126	WALL ON BASE
127	WALL ON BASE
128	WALL ON BASE
129	WALL ON BASE
130	WALL ON BASE
131	WALL ON BASE
132	WALL ON BASE
133	WALL ON BASE
134	WALL ON BASE
135	WALL ON BASE
136	WALL ON BASE
137	WALL ON BASE
138	WALL ON BASE
139	WALL ON BASE
140	WALL ON BASE
141	WALL ON BASE
142	WALL ON BASE
143	WALL ON BASE
144	WALL ON BASE
145	WALL ON BASE
146	WALL ON BASE
147	WALL ON BASE
148	WALL ON BASE
149	WALL ON BASE
150	WALL ON BASE

- GENERAL NOTES**
1. INSULATION - R-19 E.B. SYSTEM
 2. F.E.M.B. WALLS SHALL HAVE NOT LESS THAN R-19 WITH AN EXPOSED, FACED, & BANDED SYSTEM
 3. F.E.M.B. WALLS SHALL BE R-19 FACTORY FINISH WITH "STANDARD" FACTORY FINISH
 4. FLOOR FINISH SHALL BE R-19 FACTORY FINISH WITH "STANDARD" FACTORY FINISH
 5. WALLS SHALL BE R-19 FACTORY FINISH WITH "STANDARD" FACTORY FINISH
 6. ROOF FINISH SHALL BE R-19 FACTORY FINISH WITH "STANDARD" FACTORY FINISH
 7. ROOF FINISH SHALL BE R-19 FACTORY FINISH WITH "STANDARD" FACTORY FINISH
 8. ROOF FINISH SHALL BE R-19 FACTORY FINISH WITH "STANDARD" FACTORY FINISH
 9. ROOF FINISH SHALL BE R-19 FACTORY FINISH WITH "STANDARD" FACTORY FINISH
 10. ROOF FINISH SHALL BE R-19 FACTORY FINISH WITH "STANDARD" FACTORY FINISH
 11. ROOF FINISH SHALL BE R-19 FACTORY FINISH WITH "STANDARD" FACTORY FINISH
 12. ROOF FINISH SHALL BE R-19 FACTORY FINISH WITH "STANDARD" FACTORY FINISH
 13. ROOF FINISH SHALL BE R-19 FACTORY FINISH WITH "STANDARD" FACTORY FINISH
 14. ROOF FINISH SHALL BE R-19 FACTORY FINISH WITH "STANDARD" FACTORY FINISH
 15. ROOF FINISH SHALL BE R-19 FACTORY FINISH WITH "STANDARD" FACTORY FINISH
 16. ROOF FINISH SHALL BE R-19 FACTORY FINISH WITH "STANDARD" FACTORY FINISH
 17. ROOF FINISH SHALL BE R-19 FACTORY FINISH WITH "STANDARD" FACTORY FINISH
 18. ROOF FINISH SHALL BE R-19 FACTORY FINISH WITH "STANDARD" FACTORY FINISH
 19. ROOF FINISH SHALL BE R-19 FACTORY FINISH WITH "STANDARD" FACTORY FINISH
 20. ROOF FINISH SHALL BE R-19 FACTORY FINISH WITH "STANDARD" FACTORY FINISH

DATE:	25/03/2011 11:52:27 AM
PROJECT:	Warehouse 1 Building Modifications
SCALE:	3/8" = 1'-0"
ISSUED FOR:	ISSUED FOR BID
REVISIONS:	1

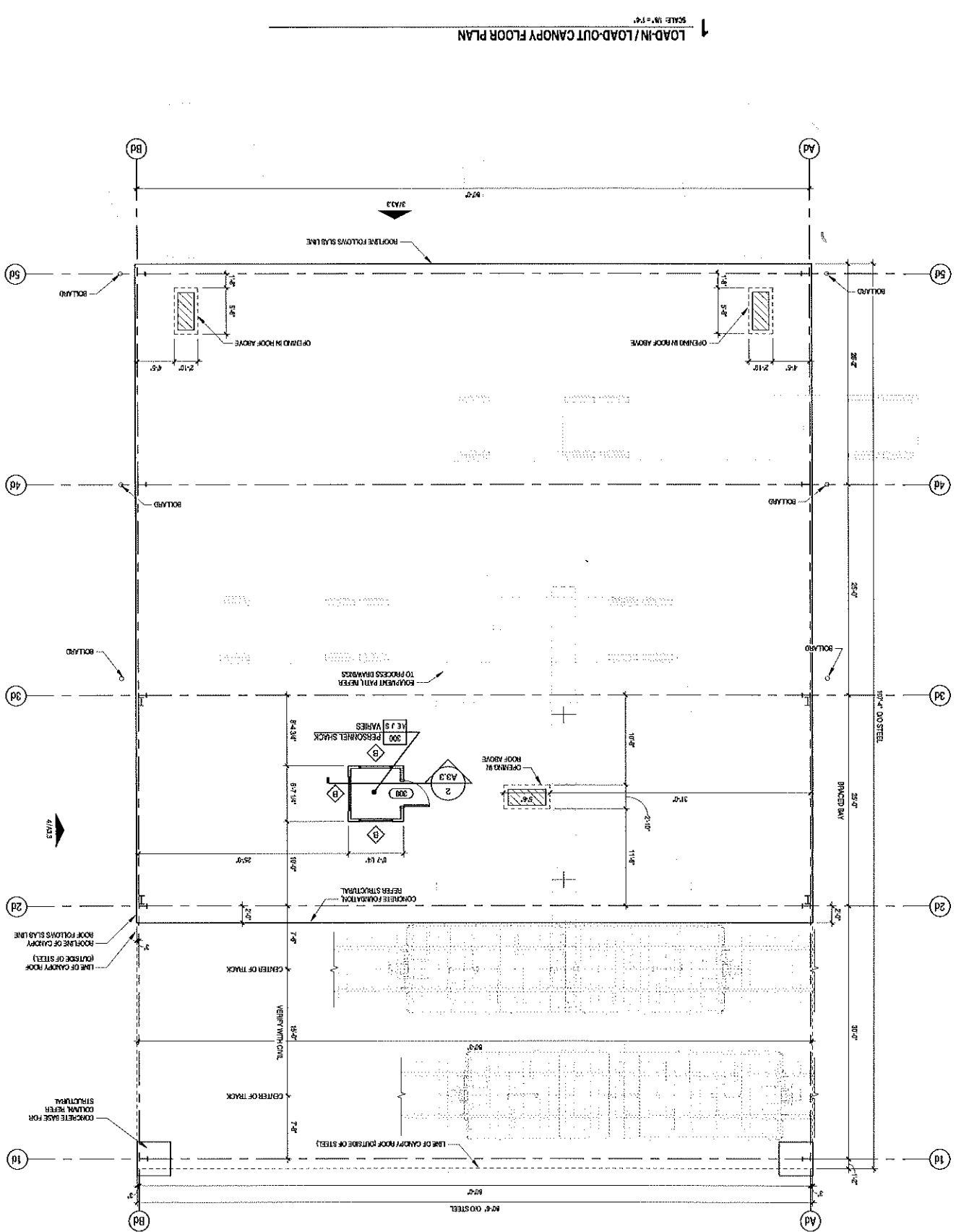
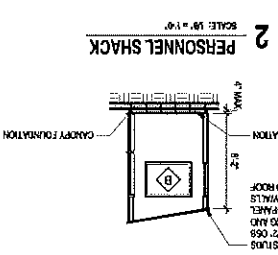
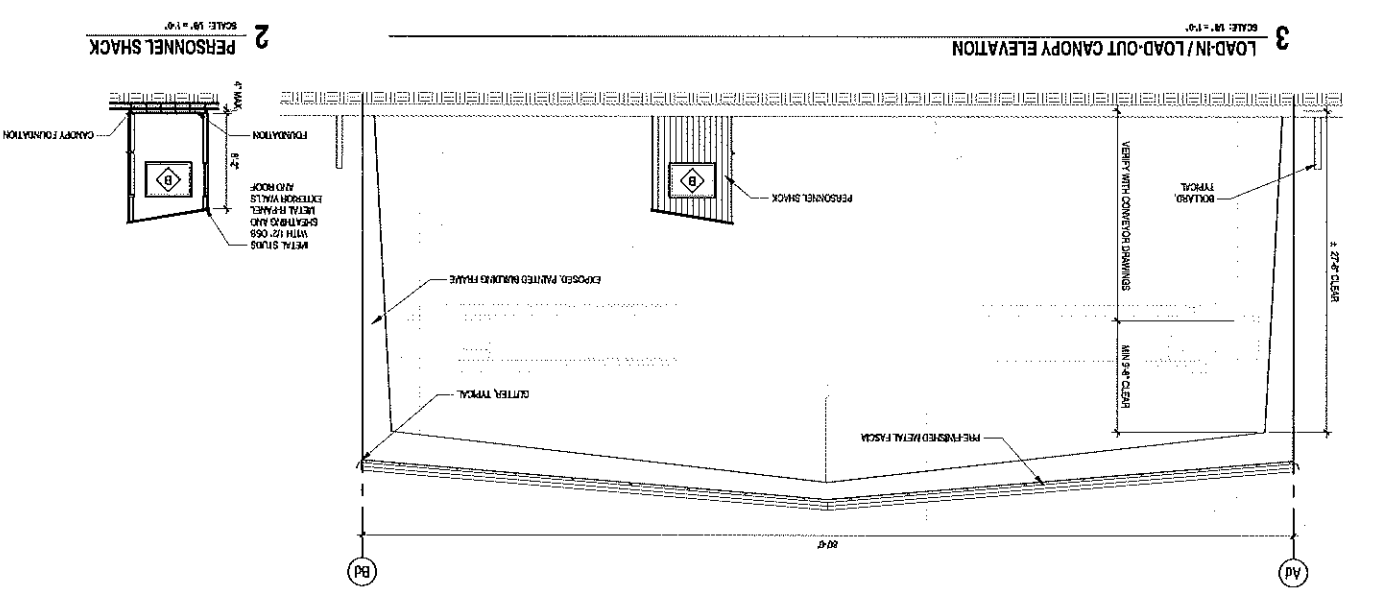
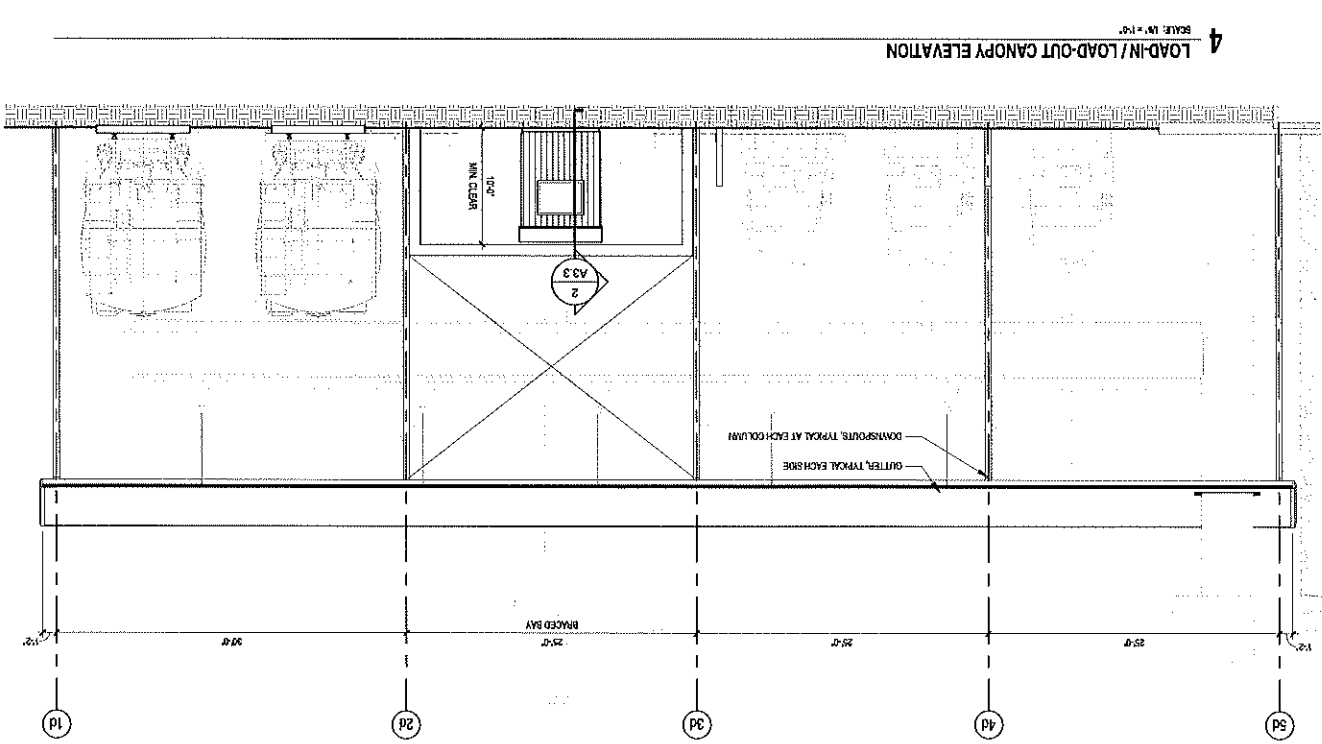
WAREHOUSE FLOOR PLAN
ISSUED FOR BID

REVISIONS

NO.	DATE	DESCRIPTION
1	2/14/2011	Warehouse 1 Building Modifications

SOUTHERN PRECISION SANDS
NEW COATING FACILITY
VOCA, TEXAS

JOHNSON & PACE
INCORPORATED
SOLUTIONS - INNOVATION - SUPPORT
10000 TEXAS ROAD
HOUSTON, TEXAS 77036
713.865.1234
www.johnsonandpace.com



- GENERAL NOTES**
1. PANEL - ROOF PANELS SHALL BE 1/8" THICK, 24" WIDE WITH 1/2" RIBS.
 2. PANEL - SPRIEN SHALL PROVIDE GUTTERS AND DOWNSPOUTS AS INDICATED ON DRAWINGS. FLASH TO MATCH WALL PANELS.
 3. PANEL - SPRIEN SHALL PROVIDE ALL FLASHINGS AND TRIMS COMPATIBLE WITH THE ROOF SYSTEM AND PANELS.
 4. PANEL - SPRIEN TO PROVIDE TRAYS, WALL AND ROOF AND FLASHING INSTALLATION.
 5. PANEL - SPRIEN SHALL PROVIDE TRAYS, WALL AND ROOF AND FLASHING COMPATIBLE WITH THE ROOF SYSTEM AND PANELS.
 6. PANEL - SPRIEN SHALL PROVIDE TRAYS, WALL AND ROOF AND FLASHING COMPATIBLE WITH THE ROOF SYSTEM AND PANELS.

DATE: 08/25/11 10:56:42	SCALE: AS SHOWN
PROJECT: KPA	REVISION: 1
DRAWN BY: A3.3	ISSUED FOR BID

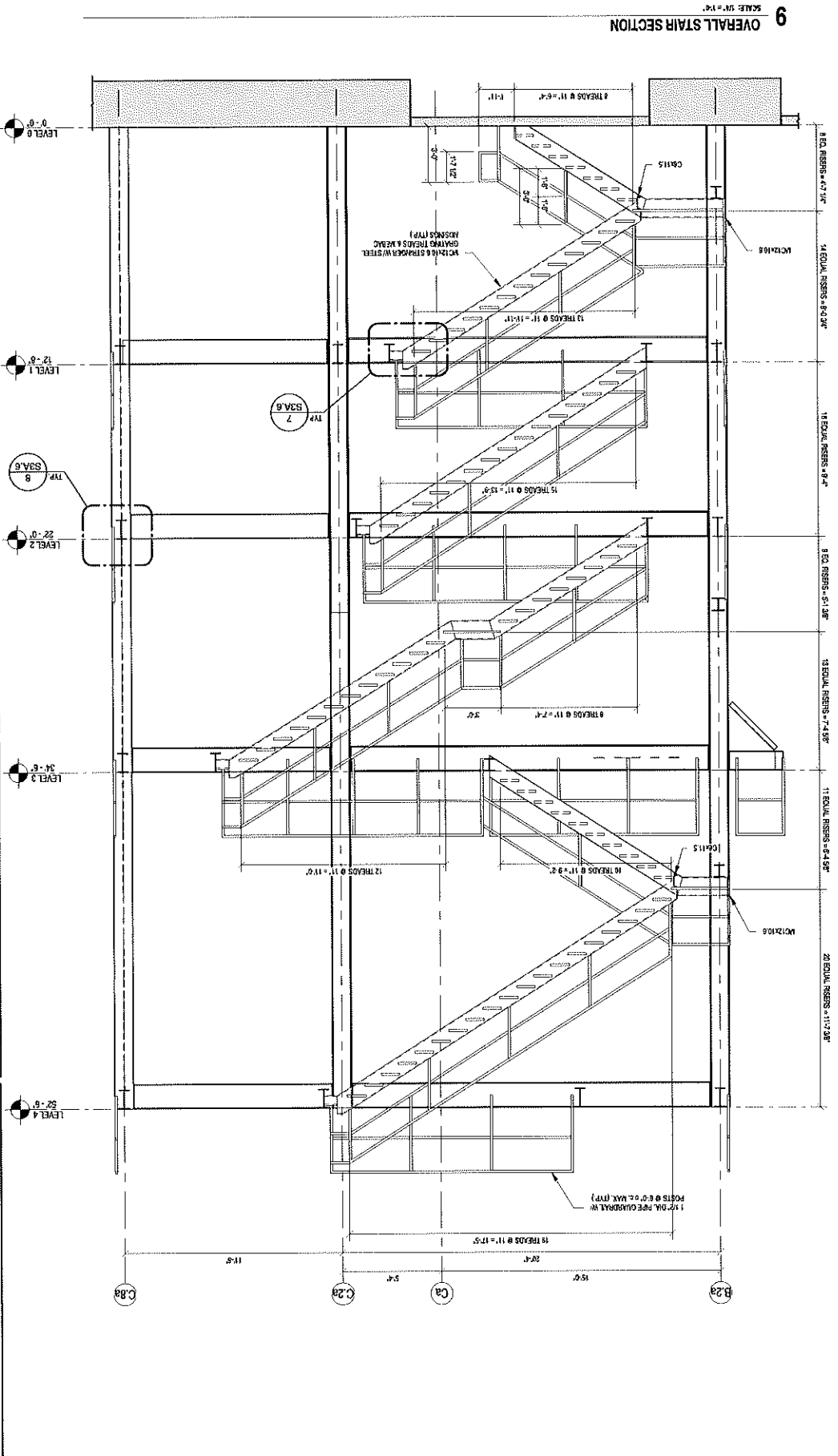
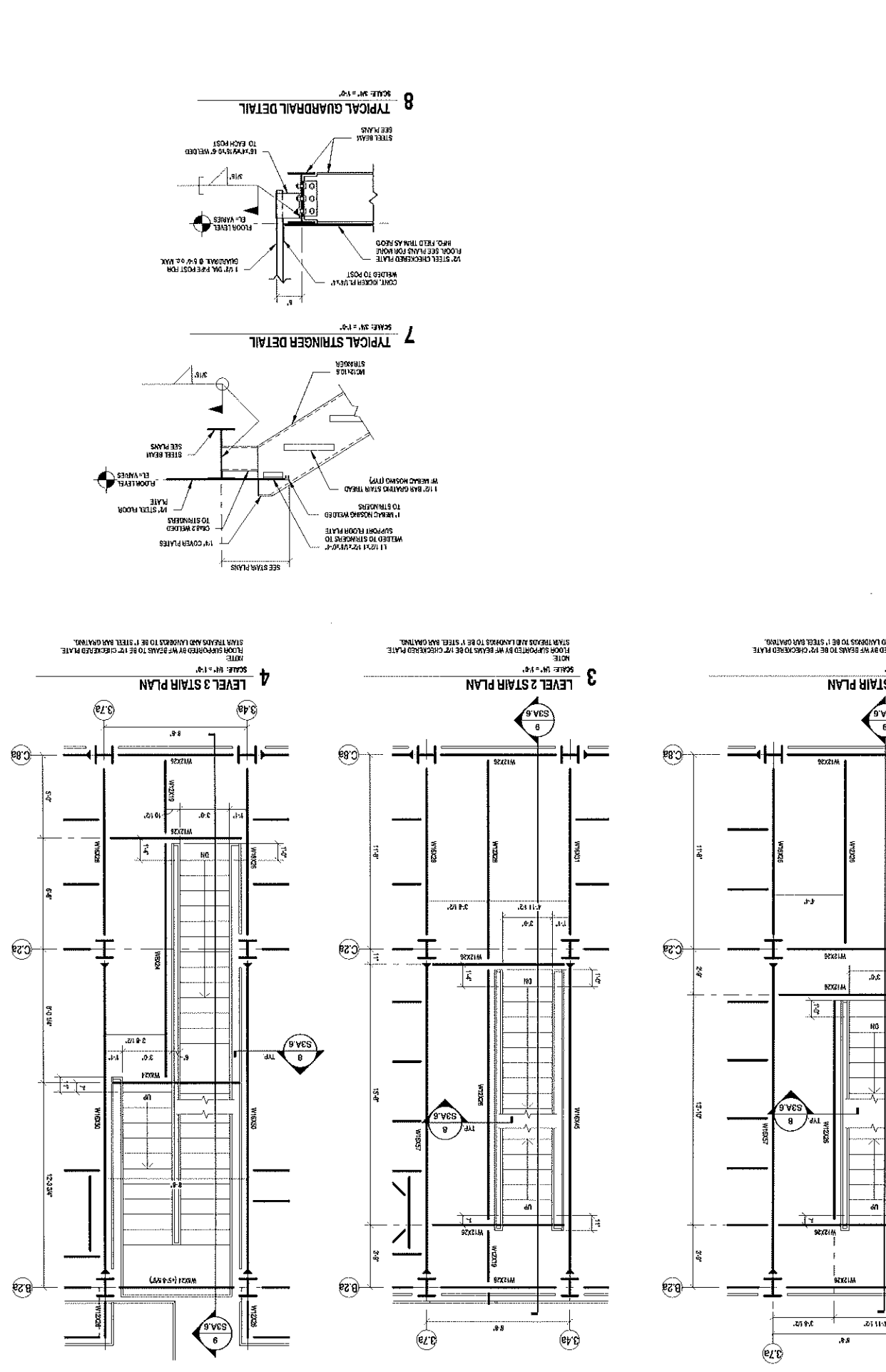
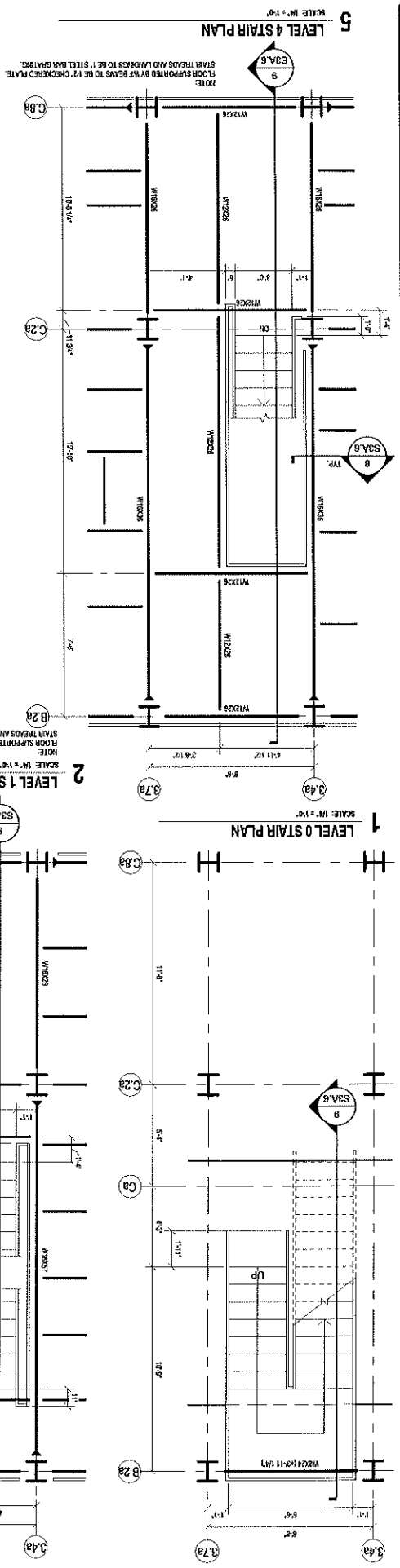
LOAD-IN/LOAD-OUT CANOPY STRUCTURE
ISSUED FOR BID

NO.	REVISIONS	DATE
1	Revision 1 Building Modifications	2/24/2011

SOUTHERN PRECISION SANDS
NEW COATING FACILITY
VOCA, TEXAS

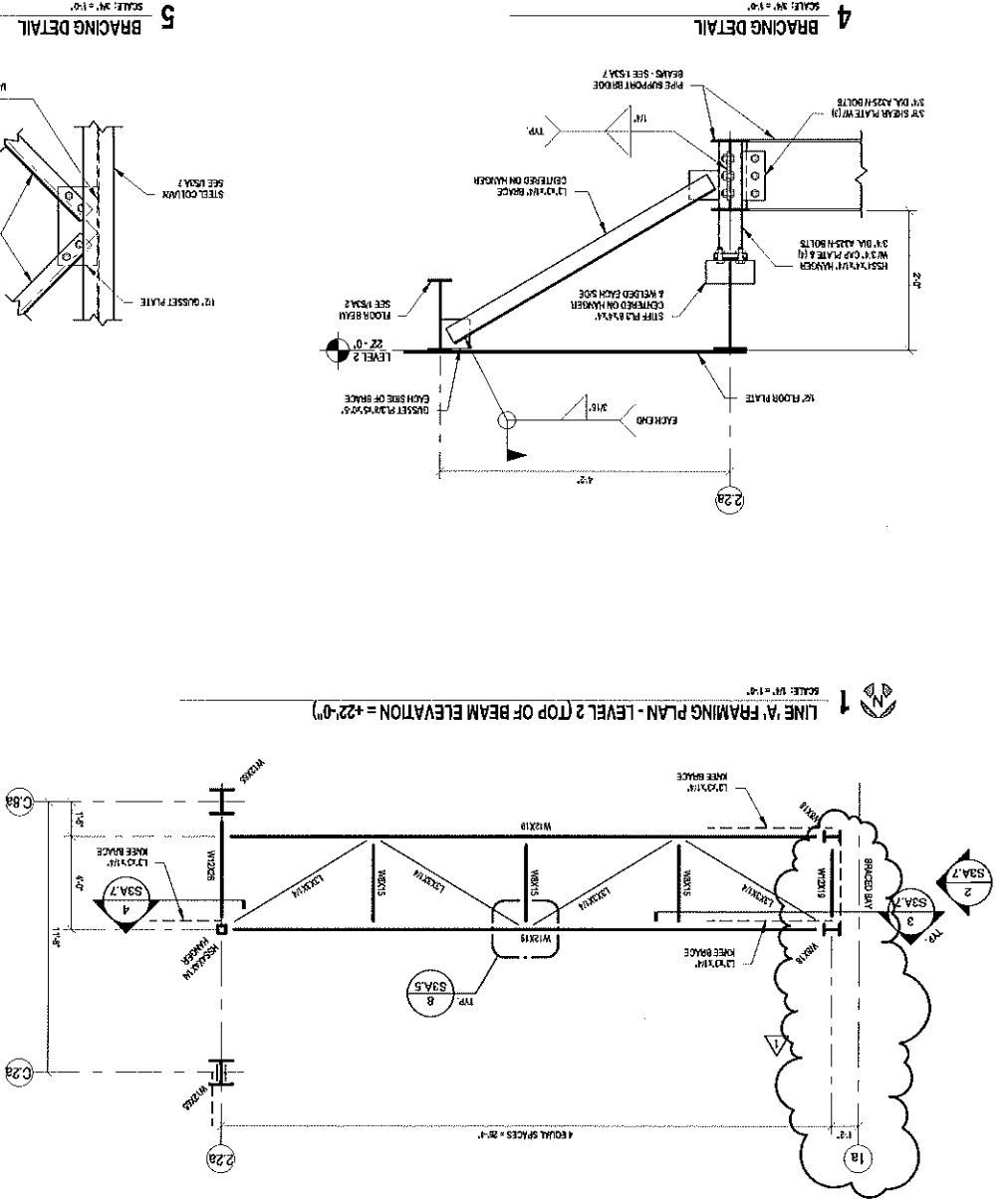
JOHNSON & PACE INCORPORATED
 2011 W. CENTRAL EXP. STE. 100
 DALLAS, TEXAS 75201
 (214) 343-1111
 WWW.JOHNSONANDPACE.COM

THIS DOCUMENT IS THE PROPERTY OF JOHNSON & PACE INCORPORATED. IT IS TO BE USED ONLY FOR THE PROJECT AND SITE SPECIFICALLY IDENTIFIED HEREIN. IT IS NOT TO BE REPRODUCED, COPIED, REPRODUCED, OR TRANSMITTED IN ANY FORM OR BY ANY MEANS, ELECTRONIC OR MECHANICAL, INCLUDING PHOTOCOPYING, RECORDING, OR BY ANY INFORMATION STORAGE AND RETRIEVAL SYSTEM, WITHOUT THE WRITTEN PERMISSION OF JOHNSON & PACE INCORPORATED. ANY UNAUTHORIZED REPRODUCTION OR TRANSMISSION OF THIS DOCUMENT IS STRICTLY PROHIBITED AND SHALL BE SUBJECT TO THE SEVEREST PENALTIES APPLICABLE BY LAW. THE USER OF THIS DOCUMENT IS SOLEMELY RESPONSIBLE FOR OBTAINING ALL NECESSARY PERMITS AND APPROVALS FROM THE APPROPRIATE AGENCIES AND AGENCIES OF JURISDICTION. THE USER OF THIS DOCUMENT IS SOLEMELY RESPONSIBLE FOR OBTAINING ALL NECESSARY PERMITS AND APPROVALS FROM THE APPROPRIATE AGENCIES AND AGENCIES OF JURISDICTION. THE USER OF THIS DOCUMENT IS SOLEMELY RESPONSIBLE FOR OBTAINING ALL NECESSARY PERMITS AND APPROVALS FROM THE APPROPRIATE AGENCIES AND AGENCIES OF JURISDICTION.



DATE: 06-06-02	DESIGNER: JDM	DATE: 01/23/01
SCALE: 1/4" = 1'-0"	REVISOR: JDM	SCALE: 1/4" = 1'-0"
PROJECT: STAIR PLANS	CLIENT: SOUTHERN PRECISION SANDS	PROJECT: STAIR PLANS
NO. 1	NO. 2	NO. 3
NO. 4	NO. 5	NO. 6
NO. 7	NO. 8	NO. 9
NO. 10	NO. 11	NO. 12
NO. 13	NO. 14	NO. 15
NO. 16	NO. 17	NO. 18
NO. 19	NO. 20	NO. 21
NO. 22	NO. 23	NO. 24
NO. 25	NO. 26	NO. 27
NO. 28	NO. 29	NO. 30
NO. 31	NO. 32	NO. 33
NO. 34	NO. 35	NO. 36
NO. 37	NO. 38	NO. 39
NO. 40	NO. 41	NO. 42
NO. 43	NO. 44	NO. 45
NO. 46	NO. 47	NO. 48
NO. 49	NO. 50	NO. 51
NO. 52	NO. 53	NO. 54
NO. 55	NO. 56	NO. 57
NO. 58	NO. 59	NO. 60
NO. 61	NO. 62	NO. 63
NO. 64	NO. 65	NO. 66
NO. 67	NO. 68	NO. 69
NO. 70	NO. 71	NO. 72
NO. 73	NO. 74	NO. 75
NO. 76	NO. 77	NO. 78
NO. 79	NO. 80	NO. 81
NO. 82	NO. 83	NO. 84
NO. 85	NO. 86	NO. 87
NO. 88	NO. 89	NO. 90
NO. 91	NO. 92	NO. 93
NO. 94	NO. 95	NO. 96
NO. 97	NO. 98	NO. 99
NO. 100	NO. 101	NO. 102
NO. 103	NO. 104	NO. 105
NO. 106	NO. 107	NO. 108
NO. 109	NO. 110	NO. 111
NO. 112	NO. 113	NO. 114
NO. 115	NO. 116	NO. 117
NO. 118	NO. 119	NO. 120
NO. 121	NO. 122	NO. 123
NO. 124	NO. 125	NO. 126
NO. 127	NO. 128	NO. 129
NO. 130	NO. 131	NO. 132
NO. 133	NO. 134	NO. 135
NO. 136	NO. 137	NO. 138
NO. 139	NO. 140	NO. 141
NO. 142	NO. 143	NO. 144
NO. 145	NO. 146	NO. 147
NO. 148	NO. 149	NO. 150
NO. 151	NO. 152	NO. 153
NO. 154	NO. 155	NO. 156
NO. 157	NO. 158	NO. 159
NO. 160	NO. 161	NO. 162
NO. 163	NO. 164	NO. 165
NO. 166	NO. 167	NO. 168
NO. 169	NO. 170	NO. 171
NO. 172	NO. 173	NO. 174
NO. 175	NO. 176	NO. 177
NO. 178	NO. 179	NO. 180
NO. 181	NO. 182	NO. 183
NO. 184	NO. 185	NO. 186
NO. 187	NO. 188	NO. 189
NO. 190	NO. 191	NO. 192
NO. 193	NO. 194	NO. 195
NO. 196	NO. 197	NO. 198
NO. 199	NO. 200	NO. 201
NO. 202	NO. 203	NO. 204
NO. 205	NO. 206	NO. 207
NO. 208	NO. 209	NO. 210
NO. 211	NO. 212	NO. 213
NO. 214	NO. 215	NO. 216
NO. 217	NO. 218	NO. 219
NO. 220	NO. 221	NO. 222
NO. 223	NO. 224	NO. 225
NO. 226	NO. 227	NO. 228
NO. 229	NO. 230	NO. 231
NO. 232	NO. 233	NO. 234
NO. 235	NO. 236	NO. 237
NO. 238	NO. 239	NO. 240
NO. 241	NO. 242	NO. 243
NO. 244	NO. 245	NO. 246
NO. 247	NO. 248	NO. 249
NO. 250	NO. 251	NO. 252
NO. 253	NO. 254	NO. 255
NO. 256	NO. 257	NO. 258
NO. 259	NO. 260	NO. 261
NO. 262	NO. 263	NO. 264
NO. 265	NO. 266	NO. 267
NO. 268	NO. 269	NO. 270
NO. 271	NO. 272	NO. 273
NO. 274	NO. 275	NO. 276
NO. 277	NO. 278	NO. 279
NO. 280	NO. 281	NO. 282
NO. 283	NO. 284	NO. 285
NO. 286	NO. 287	NO. 288
NO. 289	NO. 290	NO. 291
NO. 292	NO. 293	NO. 294
NO. 295	NO. 296	NO. 297
NO. 298	NO. 299	NO. 300
NO. 301	NO. 302	NO. 303
NO. 304	NO. 305	NO. 306
NO. 307	NO. 308	NO. 309
NO. 310	NO. 311	NO. 312
NO. 313	NO. 314	NO. 315
NO. 316	NO. 317	NO. 318
NO. 319	NO. 320	NO. 321
NO. 322	NO. 323	NO. 324
NO. 325	NO. 326	NO. 327
NO. 328	NO. 329	NO. 330
NO. 331	NO. 332	NO. 333
NO. 334	NO. 335	NO. 336
NO. 337	NO. 338	NO. 339
NO. 340	NO. 341	NO. 342
NO. 343	NO. 344	NO. 345
NO. 346	NO. 347	NO. 348
NO. 349	NO. 350	NO. 351
NO. 352	NO. 353	NO. 354
NO. 355	NO. 356	NO. 357
NO. 358	NO. 359	NO. 360
NO. 361	NO. 362	NO. 363
NO. 364	NO. 365	NO. 366
NO. 367	NO. 368	NO. 369
NO. 370	NO. 371	NO. 372
NO. 373	NO. 374	NO. 375
NO. 376	NO. 377	NO. 378
NO. 379	NO. 380	NO. 381
NO. 382	NO. 383	NO. 384
NO. 385	NO. 386	NO. 387
NO. 388	NO. 389	NO. 390
NO. 391	NO. 392	NO. 393
NO. 394	NO. 395	NO. 396
NO. 397	NO. 398	NO. 399
NO. 400	NO. 401	NO. 402
NO. 403	NO. 404	NO. 405
NO. 406	NO. 407	NO. 408
NO. 409	NO. 410	NO. 411
NO. 412	NO. 413	NO. 414
NO. 415	NO. 416	NO. 417
NO. 418	NO. 419	NO. 420
NO. 421	NO. 422	NO. 423
NO. 424	NO. 425	NO. 426
NO. 427	NO. 428	NO. 429
NO. 430	NO. 431	NO. 432
NO. 433	NO. 434	NO. 435
NO. 436	NO. 437	NO. 438
NO. 439	NO. 440	NO. 441
NO. 442	NO. 443	NO. 444
NO. 445	NO. 446	NO. 447
NO. 448	NO. 449	NO. 450
NO. 451	NO. 452	NO. 453
NO. 454	NO. 455	NO. 456
NO. 457	NO. 458	NO. 459
NO. 460	NO. 461	NO. 462
NO. 463	NO. 464	NO. 465
NO. 466	NO. 467	NO. 468
NO. 469	NO. 470	NO. 471
NO. 472	NO. 473	NO. 474
NO. 475	NO. 476	NO. 477
NO. 478	NO. 479	NO. 480
NO. 481	NO. 482	NO. 483
NO. 484	NO. 485	NO. 486
NO. 487	NO. 488	NO. 489
NO. 490	NO. 491	NO. 492
NO. 493	NO. 494	NO. 495
NO. 496	NO. 497	NO. 498
NO. 499	NO. 500	NO. 501
NO. 502	NO. 503	NO. 504
NO. 505	NO. 506	NO. 507
NO. 508	NO. 509	NO. 510
NO. 511	NO. 512	NO. 513
NO. 514	NO. 515	NO. 516
NO. 517	NO. 518	NO. 519
NO. 520	NO. 521	NO. 522
NO. 523	NO. 524	NO. 525
NO. 526	NO. 527	NO. 528
NO. 529	NO. 530	NO. 531
NO. 532	NO. 533	NO. 534
NO. 535	NO. 536	NO. 537
NO. 538	NO. 539	NO. 540
NO. 541	NO. 542	NO. 543
NO. 544	NO. 545	NO. 546
NO. 547	NO. 548	NO. 549
NO. 550	NO. 551	NO. 552
NO. 553	NO. 554	NO. 555
NO. 556	NO. 557	NO. 558
NO. 559	NO. 560	NO. 561
NO. 562	NO. 563	NO. 564
NO. 565	NO. 566	NO. 567
NO. 568	NO. 569	NO. 570
NO. 571	NO. 572	NO. 573
NO. 574	NO. 575	NO. 576
NO. 577	NO. 578	NO. 579
NO. 580	NO. 581	NO. 582
NO. 583	NO. 584	NO. 585
NO. 586	NO. 587	NO. 588
NO. 589	NO. 590	NO. 591
NO. 592	NO. 593	NO. 594
NO. 595	NO. 596	NO. 597
NO. 598	NO. 599	NO. 600
NO. 601	NO. 602	NO. 603
NO. 604	NO. 605	NO. 606
NO. 607	NO. 608	NO. 609
NO. 610	NO. 611	NO. 612
NO. 613	NO. 614	NO. 615
NO. 616	NO. 617	NO. 618
NO. 619	NO. 620	NO. 621
NO. 622	NO. 623	NO. 624
NO. 625	NO. 626	NO. 627
NO. 628	NO. 629	NO. 630
NO. 631	NO. 632	NO. 633
NO. 634	NO. 635	NO. 636
NO. 637	NO. 638	NO. 639
NO. 640	NO. 641	NO. 642
NO. 643	NO. 644	NO. 645
NO. 646	NO. 647	NO. 648
NO. 649	NO. 650	NO. 651
NO. 652	NO. 653	NO. 654
NO. 655	NO. 656	NO. 657
NO. 658	NO. 659	NO. 660
NO. 661	NO. 662	NO. 663
NO. 664	NO. 665	NO. 666
NO. 667	NO. 668	NO. 669
NO. 670	NO. 671	NO. 672
NO. 673	NO. 674	NO. 675
NO. 676	NO. 677	NO. 678
NO. 679	NO. 680	NO. 681
NO. 682	NO. 683	NO. 684
NO. 685	NO. 686	NO. 687
NO. 688	NO. 689	NO. 690
NO. 691	NO. 692	NO. 693
NO. 694	NO. 695	NO. 696
NO. 697	NO. 698	NO. 699
NO. 700	NO. 701	NO. 702
NO. 703	NO. 704	NO. 705
NO. 706	NO. 707	NO. 708
NO. 709	NO. 710	NO. 711
NO. 712	NO. 713	NO. 714
NO. 715	NO. 716	NO. 717
NO. 718	NO. 719	NO. 720
NO. 721	NO. 722	NO. 723
NO. 724	NO. 725	NO. 726
NO. 727	NO. 728	NO. 729
NO. 730	NO. 731	NO. 732
NO. 733	NO. 734	NO. 735
NO. 736	NO. 737	NO. 738
NO. 739	NO. 740	NO. 741
NO. 742	NO. 743	NO. 744
NO. 745	NO. 746	NO. 747
NO. 748	NO. 749	NO. 750
NO. 751	NO. 752	NO. 753
NO. 754	NO. 755	NO. 756
NO. 757	NO. 758	NO. 759
NO. 760	NO. 761	NO. 762
NO. 763	NO. 764	NO. 765
NO. 766	NO. 767	NO. 768
NO. 769	NO. 770	NO. 771
NO. 772	NO. 773	NO. 774
NO. 775	NO. 776	NO. 777
NO. 778	NO. 779	NO. 780
NO. 781	NO. 782	NO. 783
NO. 784	NO. 785	NO. 786
NO. 787	NO. 788	NO. 789
NO. 790	NO. 791	NO. 792
NO. 793	NO. 794	NO. 795
NO. 796	NO. 797	NO. 798
NO. 799	NO. 800	NO. 801
NO. 802	NO. 803	NO. 804
NO. 805	NO. 806	NO. 807
NO		

THESE DRAWINGS ARE THE PROPERTY OF JOHNSON & PACE INCORPORATED. ANY REUSE OR REPRODUCTION OF THESE DRAWINGS WITHOUT THE WRITTEN PERMISSION OF JOHNSON & PACE INCORPORATED IS STRICTLY PROHIBITED. ANY REUSE OR REPRODUCTION OF THESE DRAWINGS WITHOUT THE WRITTEN PERMISSION OF JOHNSON & PACE INCORPORATED IS STRICTLY PROHIBITED. ANY REUSE OR REPRODUCTION OF THESE DRAWINGS WITHOUT THE WRITTEN PERMISSION OF JOHNSON & PACE INCORPORATED IS STRICTLY PROHIBITED.



DATE	2008-10-09-02	DATE	01/28/2011
DESIGNED BY	JD	CHECKED BY	RL
DRAWN BY	JD	APPROVED BY	As indicated
PROJECT NO.	2008-10-09-02	REVISIONS	1

PIPE SUPPORT BRIDGE DETAILS

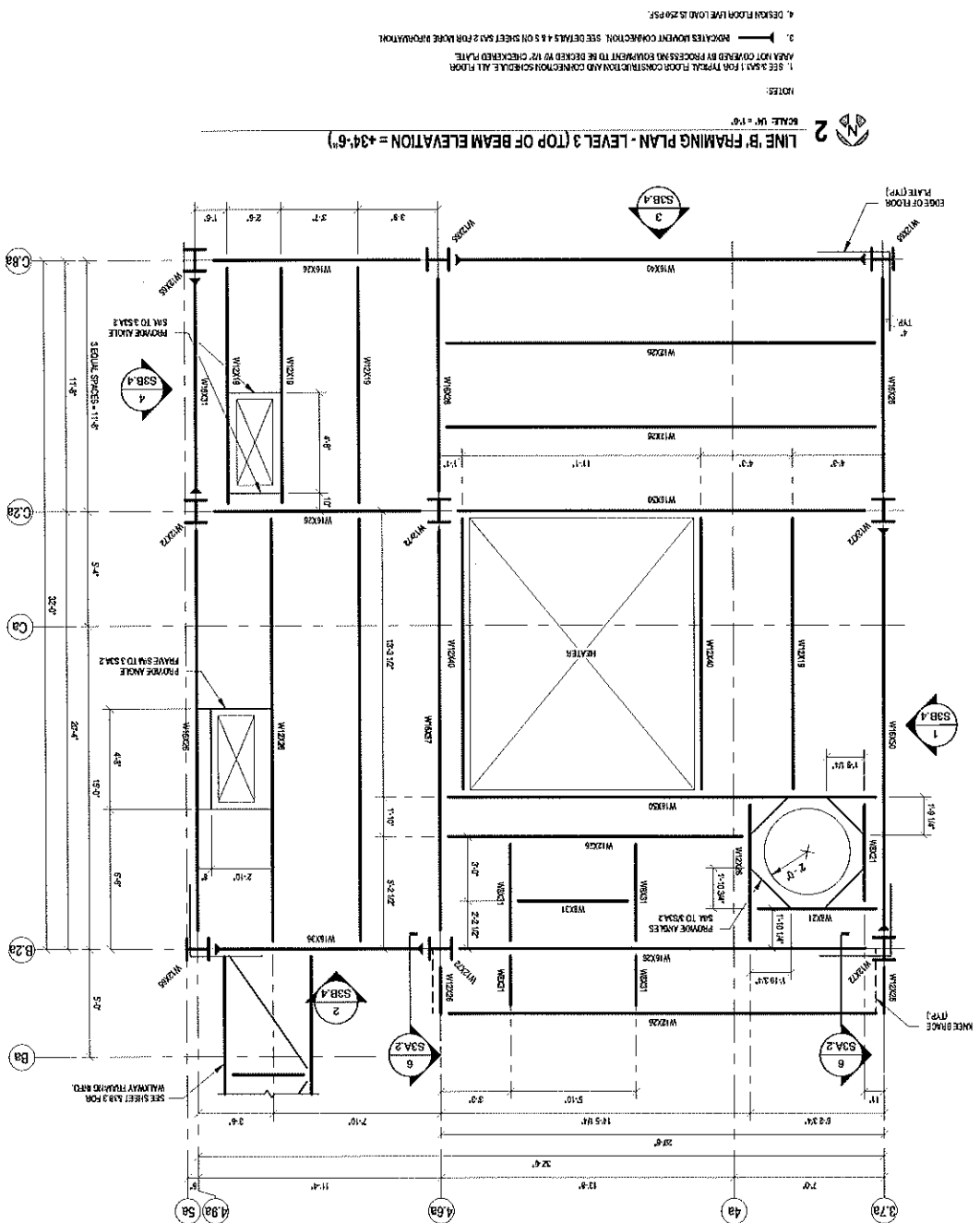
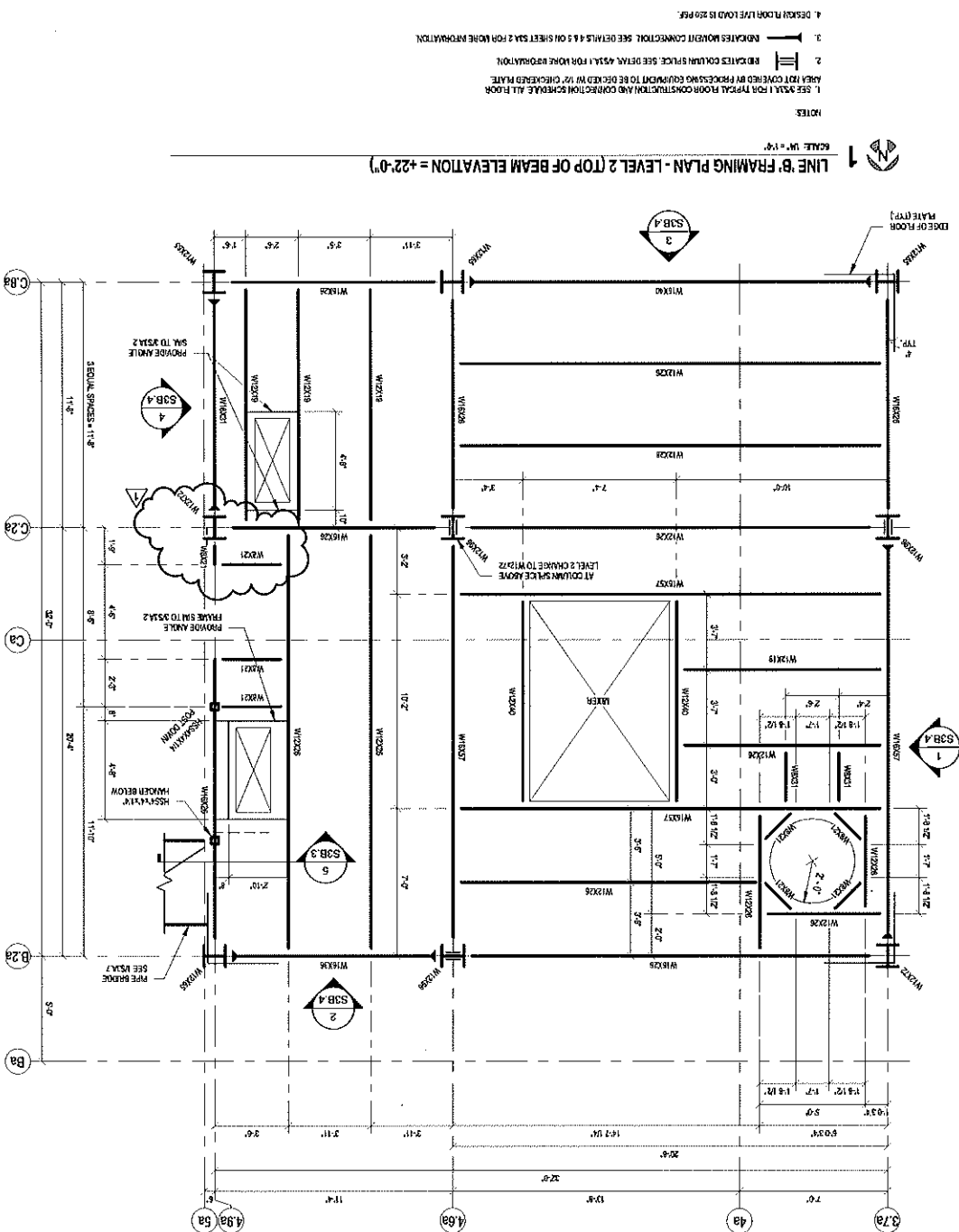
ISSUED FOR BID

NO.	REVISIONS	DATE
1	REVISED AS NOTED	2-4-11

SOUTHERN PRECISION SANDS
NEW COATING FACILITY
VOCA, TEXAS

This document is released for the purpose of information review only. The authority of Johnson & Pace, P.C., is not intended to be construed as a representation or warranty of any kind. The user of this document assumes all liability for its use. The user of this document assumes all liability for its use.

JOHNSON & PACE
 INCORPORATED
 ENGINEERING - ARCHITECTURE - SURVEYING
 101 W. WILSON ST., SUITE 300
 LITTLE ROCK, AR 72201
 (501) 225-1111
 www.johnsonandpace.com



REVISIONS

NO.	DATE	BY	REVISION
1	2-4-11	SAW	REVISED AS NOTED

REVISIONS

NO.	DATE	BY	REVISION
1	2-4-11	SAW	REVISED AS NOTED

SOUTHERN PRECISION SANDS
NEW COATING FACILITY
VOCA, TEXAS

This document is released for the purpose of obtaining review under the authority of the relevant laws, regulations, rules and orders of the state of Texas, and is not to be construed as an offer of insurance or any other financial product. The user shall be responsible for obtaining all necessary permits and approvals from the appropriate agencies. The user shall be responsible for obtaining all necessary permits and approvals from the appropriate agencies. The user shall be responsible for obtaining all necessary permits and approvals from the appropriate agencies.

JOHNSON & PACE
INCORPORATED
ENGINEERING, ARCHITECTURE, SCANNING
1001 W. LOOP WEST, SUITE 200
DALLAS, TEXAS 75243
PHONE: 214.343.1111
WWW.JPINC.COM

LINE 'B' TOWER FRAMING PLANS
ISSUED FOR BID

REVISIONS

NO.	DATE	BY	REVISION
1	2-4-11	SAW	REVISED AS NOTED

SOUTHERN PRECISION SANDS
NEW COATING FACILITY
VOCA, TEXAS

This document is released for the purpose of obtaining review under the authority of the relevant laws, regulations, rules and orders of the state of Texas, and is not to be construed as an offer of insurance or any other financial product. The user shall be responsible for obtaining all necessary permits and approvals from the appropriate agencies. The user shall be responsible for obtaining all necessary permits and approvals from the appropriate agencies. The user shall be responsible for obtaining all necessary permits and approvals from the appropriate agencies.

JOHNSON & PACE
INCORPORATED
ENGINEERING, ARCHITECTURE, SCANNING
1001 W. LOOP WEST, SUITE 200
DALLAS, TEXAS 75243
PHONE: 214.343.1111
WWW.JPINC.COM

REVISIONS

NO.	DATE	BY	REVISION
1	2-4-11	SAW	REVISED AS NOTED

REVISIONS

NO.	DATE	BY	REVISION
1	2-4-11	SAW	REVISED AS NOTED

SOUTHERN PRECISION SANDS
NEW COATING FACILITY
VOCA, TEXAS

This document is released for the purpose of obtaining review under the authority of the relevant laws, regulations, rules and orders of the state of Texas, and is not to be construed as an offer of insurance or any other financial product. The user shall be responsible for obtaining all necessary permits and approvals from the appropriate agencies. The user shall be responsible for obtaining all necessary permits and approvals from the appropriate agencies. The user shall be responsible for obtaining all necessary permits and approvals from the appropriate agencies.

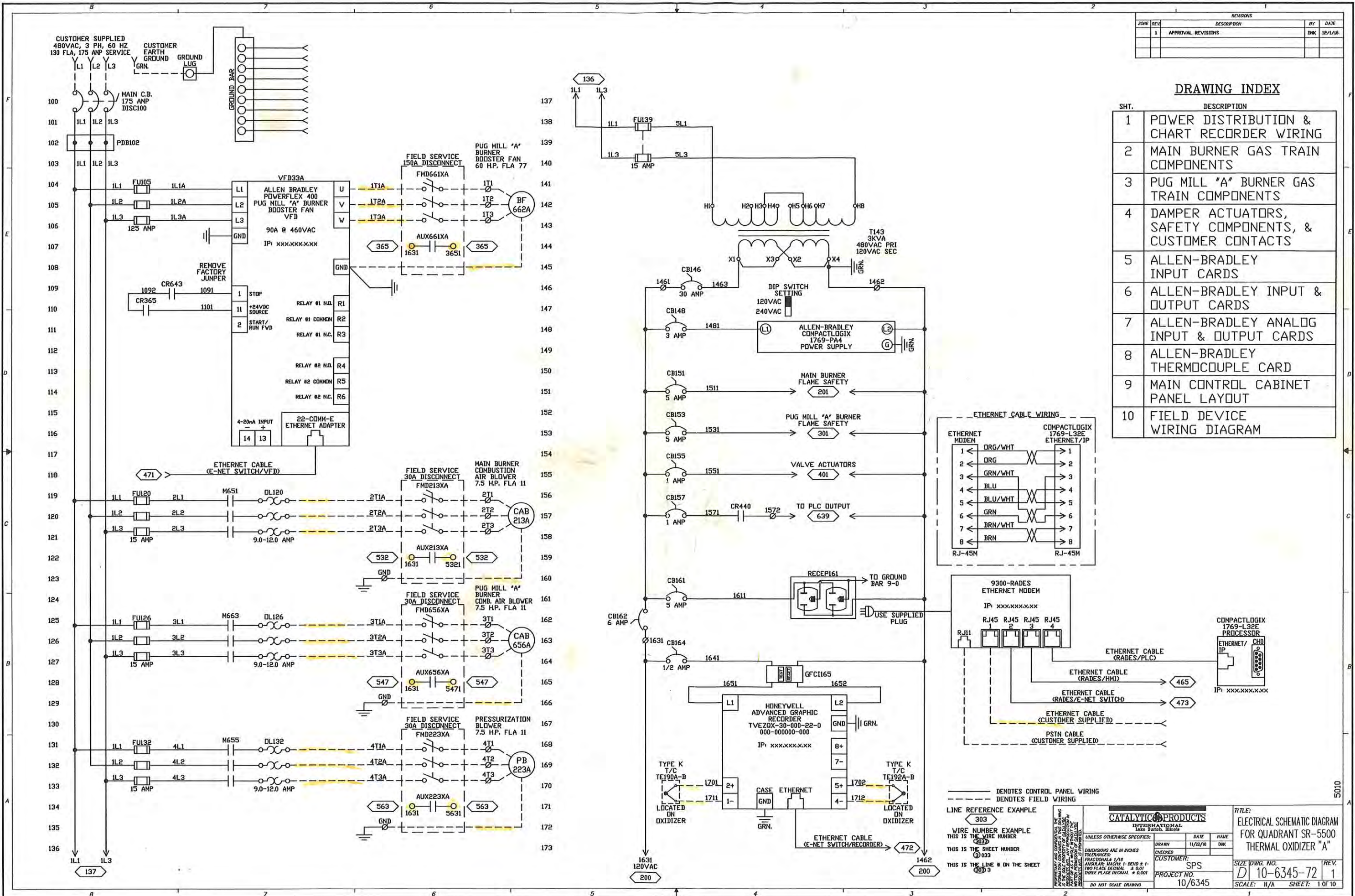
JOHNSON & PACE
INCORPORATED
ENGINEERING, ARCHITECTURE, SCANNING
1001 W. LOOP WEST, SUITE 200
DALLAS, TEXAS 75243
PHONE: 214.343.1111
WWW.JPINC.COM

LINE 'B' TOWER FRAMING PLANS
ISSUED FOR BID

ZONE	REV	DESCRIPTION	BY	DATE
	1	APPROVAL REVISIONS	DMK	12/1/18

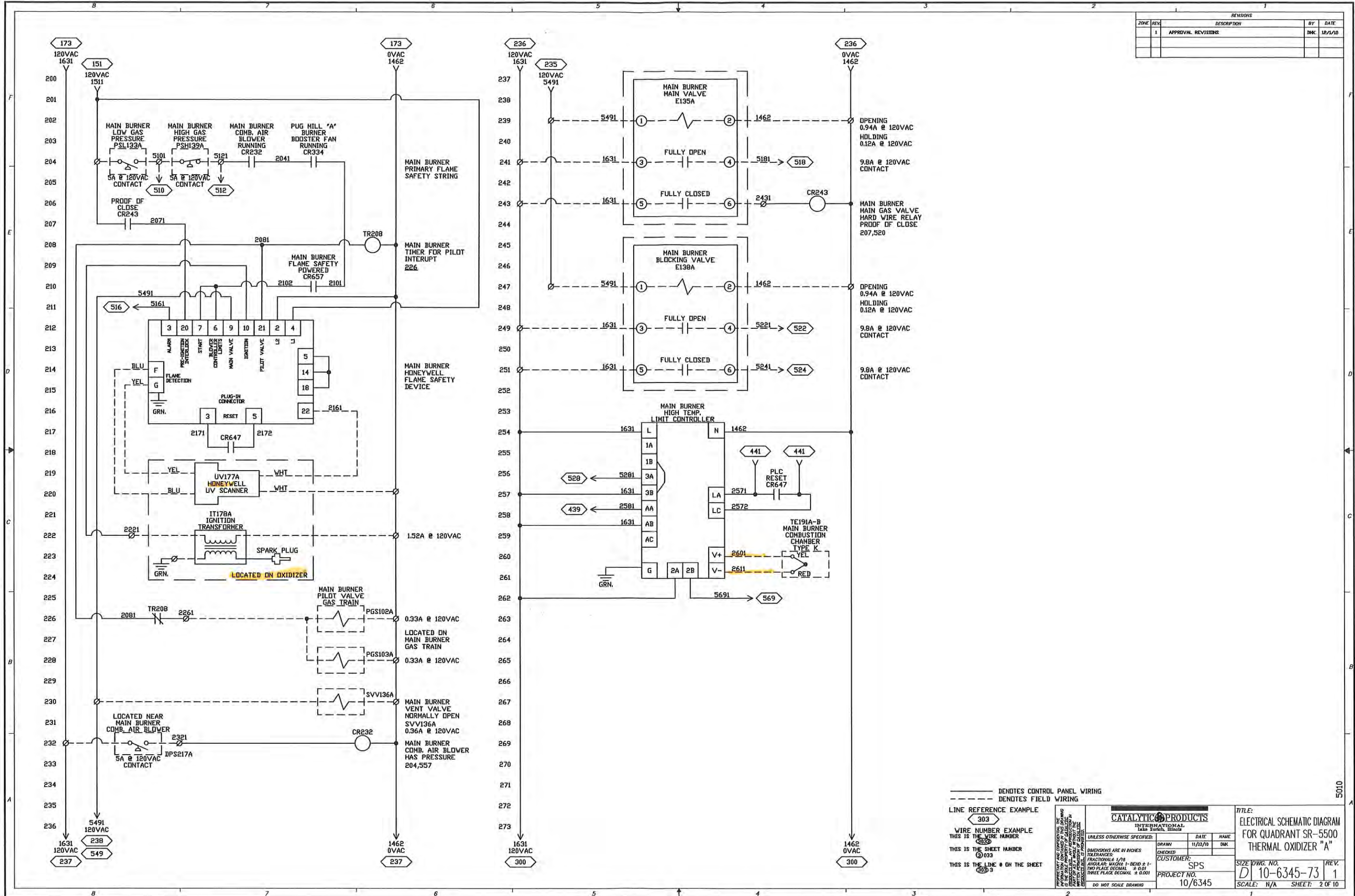
DRAWING INDEX

SHT.	DESCRIPTION
1	POWER DISTRIBUTION & CHART RECORDER WIRING
2	MAIN BURNER GAS TRAIN COMPONENTS
3	PUG MILL "A" BURNER GAS TRAIN COMPONENTS
4	DAMPER ACTUATORS, SAFETY COMPONENTS, & CUSTOMER CONTACTS
5	ALLEN-BRADLEY INPUT CARDS
6	ALLEN-BRADLEY INPUT & OUTPUT CARDS
7	ALLEN-BRADLEY ANALOG INPUT & OUTPUT CARDS
8	ALLEN-BRADLEY THERMOCOUPLE CARD
9	MAIN CONTROL CABINET PANEL LAYOUT
10	FIELD DEVICE WIRING DIAGRAM



5010

REVISIONS				
ZONE	REV	DESCRIPTION	BY	DATE
	1	APPROVAL REVISIONS	DMK	12/1/10



———— DENOTES CONTROL PANEL WIRING
 - - - - DENOTES FIELD WIRING

LINE REFERENCE EXAMPLE
 303
 WIRE NUMBER EXAMPLE
 THIS IS THE WIRE NUMBER
 303
 THIS IS THE SHEET NUMBER
 033
 THIS IS THE LINE # ON THE SHEET
 303-3

CATALYTIC PRODUCTS
 INTERNATIONAL
 Lake Zurich, Illinois

UNLESS OTHERWISE SPECIFIED:
 DIMENSIONS ARE IN INCHES
 TOLERANCES:
 FRACTIONS: 1/16
 ANGULAR: MACH: 1-BEND ± 1°
 THREE PLACE DECIMAL ± 0.001
 DO NOT SCALE DRAWING

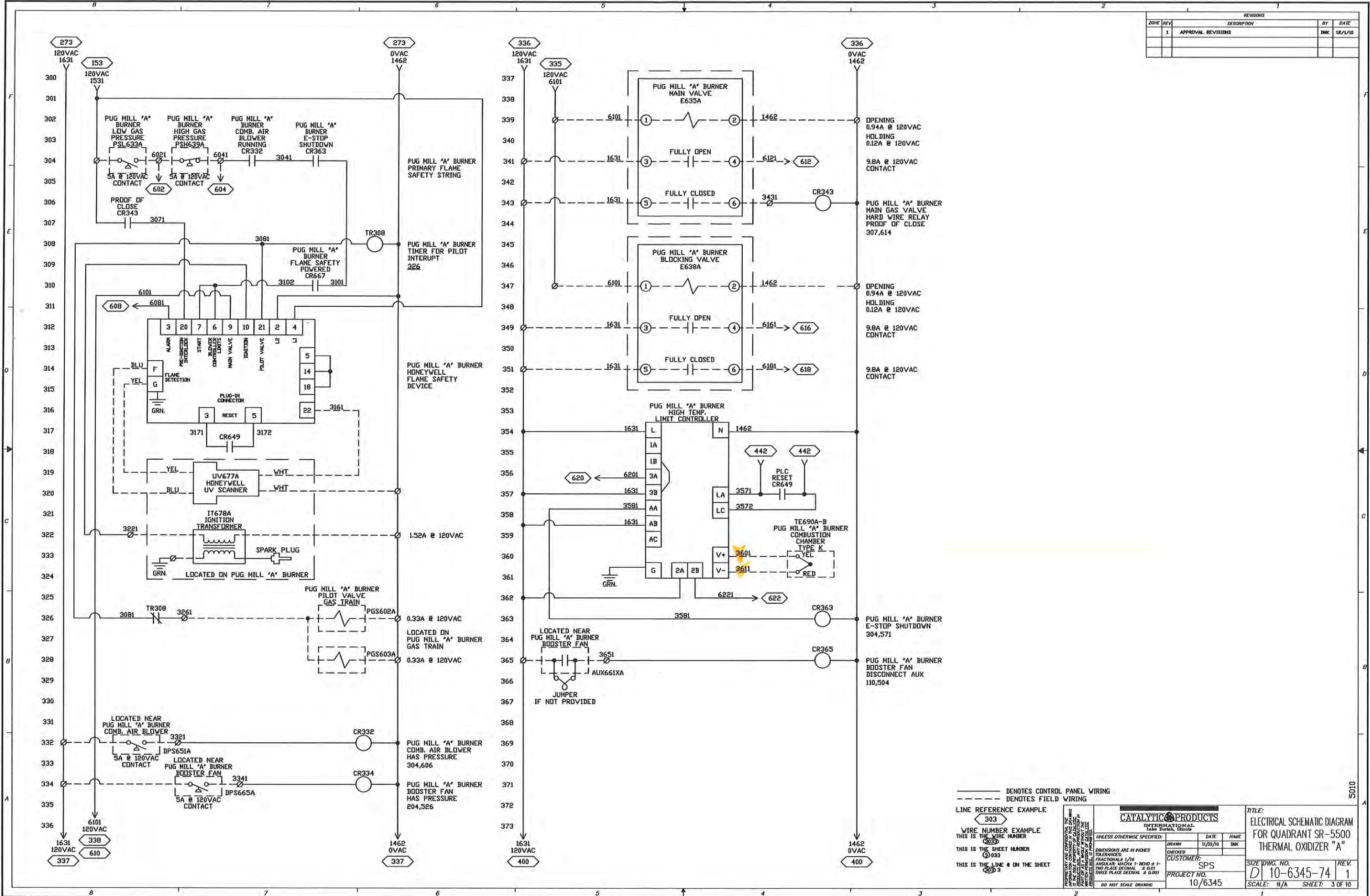
DRAWN	11/21/10	NAME	DMK
CHECKED			
CUSTOMER: SPS			
PROJECT NO. 10/6345			

TITLE:
 ELECTRICAL SCHEMATIC DIAGRAM
 FOR QUADRANT SR-5500
 THERMAL OXIDIZER "A"

SIZE DWG. NO. D 10-6345-73
 SCALE: N/A SHEET: 2 OF 10

5010

REVISIONS				
ZONE	REV	DESCRIPTION	BY	DATE
	1	APPROVAL REVISIONS	DMK	12/1/10



_____ DENOTES CONTROL PANEL WIRING
 - - - - - DENOTES FIELD WIRING
 LINE REFERENCE EXAMPLE
 303
 WIRE NUMBER EXAMPLE
 THIS IS THE WIRE NUMBER
 3033
 THIS IS THE SHEET NUMBER
 3
 THIS IS THE LINE # ON THE SHEET
 3033

CATALYTIC PRODUCTS
 INTERNATIONAL
 LANSING, MICHIGAN

UNLESS OTHERWISE SPECIFIED:
 DIMENSIONS ARE IN INCHES
 FRACTIONS: 1/16
 DECIMALS: MACH 1 - BEND ± 1°
 TWO PLACE DECIMAL ± 0.01
 THREE PLACE DECIMAL ± 0.001
 DO NOT SCALE DRAWING

DRAWN	DATE	NAME
CHECKED	11/22/10	DMK
CUSTOMER:	SPS	
PROJECT NO.	10/6345	

TITLE:
 ELECTRICAL SCHEMATIC DIAGRAM
 FOR QUADRANT SR-5500
 THERMAL OXIDIZER "A"

SIZE DWG. NO.
 D1 10-6345-74

REV.
 1

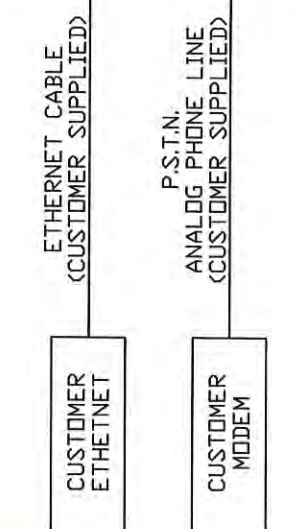
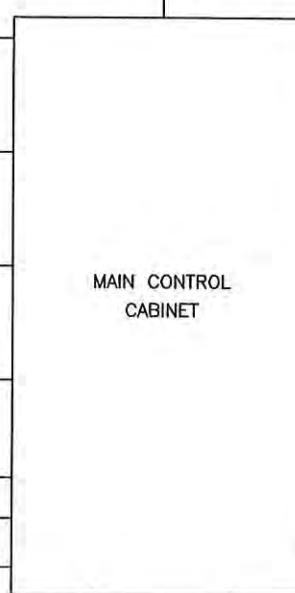
SCALE: N/A **SHEET:** 3 OF 10

5010

480VAC, 3 PHASE, 60 HZ
130 FLA, 175 AMP SERVICE

REVISIONS				
ZONE	REV	DESCRIPTION	BY	DATE
	1	APPROVAL REVISIONS	BKK	12/1/10

PUG MILL "A" BOOSTER FAN DISC. SW FMD661XA AND DISC. SW. AUX661XA	CONDUIT #1	3 BLACK 1 GREEN 4 GA. THHN STRANDED 2 RED 14 GA. THHN STRANDED
PUG MILL "A" BOOSTER FAN MOTOR BF662A	CONDUIT #1A	3 BLACK 1 GREEN 4 GA. THHN STRANDED
MAIN BURNER COMB. AIR BLOWER DISC. SW FMD213XA AND DISC. SW. AUX213XA	CONDUIT #2	3 BLACK 1 GREEN 12 GA. THHN STRANDED 2 RED 14 GA. THHN STRANDED
MAIN BURNER COMBUSTION AIR BLOWER MOTOR CAB213A	CONDUIT #2A	3 BLACK 1 GREEN 12 GA. THHN STRANDED
PUG MILL "A" BURNER COMB. AIR BLOWER DISC. SW FMD656XA AND DISC. SW. AUX656XA	CONDUIT #3	3 BLACK 1 GREEN 12 GA. THHN STRANDED 2 RED 14 GA. THHN STRANDED
PUG MILL "A" BURNER COMBUSTION AIR BLOWER MOTOR CAB656A	CONDUIT #3A	3 BLACK 1 GREEN 12 GA. THHN STRANDED
PRESSURIZATION BLOWER DISC. SW FMD223XA AND DISC. SW. AUX223XA	CONDUIT #4	3 BLACK 1 GREEN 12 GA. THHN STRANDED 2 RED 14 GA. THHN STRANDED
PRESSURIZATION BLOWER MOTOR PB223A	CONDUIT #4A	3 BLACK 1 GREEN 12 GA. THHN STRANDED
MAIN BURNER GAS TRAIN J-BOX	CONDUIT #5	20 RED, 3 WHITE AND 3 GREEN 14 GA. THHN STRANDED 1 PAIR 2 CONDUCTOR SHIELDED 18 GA. THHN STRANDED
PUG MILL "A" BURNER GAS TRAIN J-BOX	CONDUIT #6	20 RED, 3 WHITE AND 3 GREEN 14 GA. THHN STRANDED 1 PAIR 2 CONDUCTOR SHIELDED 18 GA. THHN STRANDED
MAIN BURNER COMBUSTION AIR BLOWER PSW DPS217A	CONDUIT #7	2 RED, 1 WHITE AND 1 GREEN 14 GA. THHN STRANDED
PUG MILL "A" BURNER COMBUSTION AIR BLOWER PSW DPS651A	CONDUIT #8	2 RED, 1 WHITE AND 1 GREEN 14 GA. THHN STRANDED
PUG MILL "A" BURNER BOOSTER FAN PSW DPS665A	CONDUIT #9	2 RED, 1 WHITE AND 1 GREEN 14 GA. THHN STRANDED
MAIN BURNER COMBUSTION AIR BLOWER AIR CONTROL E219A	CONDUIT #10	1 RED, 1 WHITE AND 1 GREEN 14 GA. THHN STRANDED 1 PAIR 2 CONDUCTOR SHIELDED 18 GA. THHN STRANDED
PUG MILL "A" BURNER COMBUSTION AIR BLOWER AIR CONTROL E680A	CONDUIT #11	1 RED, 1 WHITE AND 1 GREEN 14 GA. THHN STRANDED 1 PAIR 2 CONDUCTOR SHIELDED 18 GA. THHN STRANDED
PUG MILL "A" BURNER HIGH DUCT PSW PSH666A	CONDUIT #12	2 RED, 1 WHITE AND 1 GREEN 14 GA. THHN STRANDED
PRESSURIZATION BLOWER PSW DPS226A	CONDUIT #13	2 RED, 1 WHITE AND 1 GREEN 14 GA. THHN STRANDED
COMPRESSED AIR SOLENOID SV118A	CONDUIT #14	1 RED, 1 WHITE AND 1 GREEN 14 GA. THHN STRANDED
PUG MILL "A" BURNER PRESSURE X-MTR PT660A	CONDUIT #15	1 PAIR 2 CONDUCTOR SHIELDED 18 GA. THHN STRANDED
THERMOCOUPLES	CONDUIT #16	2 TYPE K T/C WIRES 20 GA. TO EACH T/C WELL (TYPICAL TO EACH T/C) (MUST BE KEPT IN SEPARATE CONDUIT)
UV SCANNERS	CONDUIT #17	2 PAIR 4 CONDUCTOR SHIELDED 12 GA. THHN STRANDED (MUST BE KEPT IN SEPARATE CONDUIT)
INTERLOCKS TO/FROM MAIN BURNER	CONDUIT #18	6 YELLOW 14 GA. THHN STRANDED
INTERLOCKS TO/FROM PUG MILL "A" BURNER	CONDUIT #19	10 YELLOW 14 GA. THHN STRANDED



CONDUIT #1	CONDUIT #1A	CONDUIT #2	CONDUIT #2A	CONDUIT #3	CONDUIT #3A	CONDUIT #4	CONDUIT #4A	CONDUIT #5	CONDUIT #6	CONDUIT #7	CONDUIT #8	CONDUIT #9	CONDUIT #10	CONDUIT #11	CONDUIT #12	CONDUIT #13	CONDUIT #14	CONDUIT #15	CONDUIT #16	CONDUIT #17	CONDUIT #18	CONDUIT #19
FMD661A DISC. SWITCH 3 BLK, 1 GRN 4 GA. WIRE NUMBER WIRE NUMBER WIRE NUMBER WIRE NUMBER 171A 172A 1631 171E GND 3651	FMD661A DISC. SWITCH 3 BLK, 1 GRN 4 GA. WIRE NUMBER WIRE NUMBER WIRE NUMBER WIRE NUMBER 171A 172A 1631 171E GND 3651	FMD213A DISC. SWITCH 3 BLK, 1 GRN 12 GA. WIRE NUMBER WIRE NUMBER WIRE NUMBER WIRE NUMBER 211 212 213 211E GND 3651	FMD213A DISC. SWITCH 3 BLK, 1 GRN 12 GA. WIRE NUMBER WIRE NUMBER WIRE NUMBER WIRE NUMBER 211 212 213 211E GND 3651	FMD656A DISC. SWITCH 3 BLK, 1 GRN 12 GA. WIRE NUMBER WIRE NUMBER WIRE NUMBER WIRE NUMBER 151 152 153 154 151E GND 3651	FMD656A DISC. SWITCH 3 BLK, 1 GRN 12 GA. WIRE NUMBER WIRE NUMBER WIRE NUMBER WIRE NUMBER 151 152 153 154 151E GND 3651	FMD223A DISC. SWITCH 3 BLK, 1 GRN 12 GA. WIRE NUMBER WIRE NUMBER WIRE NUMBER WIRE NUMBER 221 222 223 224 221E GND 3651	FMD223A DISC. SWITCH 3 BLK, 1 GRN 12 GA. WIRE NUMBER WIRE NUMBER WIRE NUMBER WIRE NUMBER 221 222 223 224 221E GND 3651	PSW DPS217A 20 RED, 3 WHITE AND 3 GREEN 14 GA. THHN STRANDED WIRE NUMBER WIRE NUMBER WIRE NUMBER WIRE NUMBER 401 402 403 404 401E GND 3651	PSW DPS217A 20 RED, 3 WHITE AND 3 GREEN 14 GA. THHN STRANDED WIRE NUMBER WIRE NUMBER WIRE NUMBER WIRE NUMBER 401 402 403 404 401E GND 3651	PSW DPS217A 2 RED, 1 WHITE AND 1 GREEN 14 GA. THHN STRANDED WIRE NUMBER WIRE NUMBER WIRE NUMBER WIRE NUMBER 401 402 403 404 401E GND 3651	PSW DPS217A 2 RED, 1 WHITE AND 1 GREEN 14 GA. THHN STRANDED WIRE NUMBER WIRE NUMBER WIRE NUMBER WIRE NUMBER 401 402 403 404 401E GND 3651	PSW DPS651A 2 RED, 1 WHITE AND 1 GREEN 14 GA. THHN STRANDED WIRE NUMBER WIRE NUMBER WIRE NUMBER WIRE NUMBER 401 402 403 404 401E GND 3651	PSW DPS651A 2 RED, 1 WHITE AND 1 GREEN 14 GA. THHN STRANDED WIRE NUMBER WIRE NUMBER WIRE NUMBER WIRE NUMBER 401 402 403 404 401E GND 3651	PSW PSH666A 2 RED, 1 WHITE AND 1 GREEN 14 GA. THHN STRANDED WIRE NUMBER WIRE NUMBER WIRE NUMBER WIRE NUMBER 401 402 403 404 401E GND 3651	PSW PSH666A 2 RED, 1 WHITE AND 1 GREEN 14 GA. THHN STRANDED WIRE NUMBER WIRE NUMBER WIRE NUMBER WIRE NUMBER 401 402 403 404 401E GND 3651	PSW DPS226A 2 RED, 1 WHITE AND 1 GREEN 14 GA. THHN STRANDED WIRE NUMBER WIRE NUMBER WIRE NUMBER WIRE NUMBER 401 402 403 404 401E GND 3651	PSW DPS226A 2 RED, 1 WHITE AND 1 GREEN 14 GA. THHN STRANDED WIRE NUMBER WIRE NUMBER WIRE NUMBER WIRE NUMBER 401 402 403 404 401E GND 3651	PT660A 1 PAIR 2 CONDUCTOR SHIELDED 18 GA. THHN STRANDED WIRE NUMBER WIRE NUMBER WIRE NUMBER WIRE NUMBER 401 402 403 404 401E GND 3651	PT660A 2 TYPE K T/C WIRES 20 GA. TO EACH T/C WELL (TYPICAL TO EACH T/C) (MUST BE KEPT IN SEPARATE CONDUIT) WIRE NUMBER WIRE NUMBER WIRE NUMBER WIRE NUMBER 401 402 403 404 401E GND 3651	PT660A 2 PAIR 4 CONDUCTOR SHIELDED 12 GA. THHN STRANDED (MUST BE KEPT IN SEPARATE CONDUIT) WIRE NUMBER WIRE NUMBER WIRE NUMBER WIRE NUMBER 401 402 403 404 401E GND 3651	PT660A 6 YELLOW 14 GA. THHN STRANDED WIRE NUMBER WIRE NUMBER WIRE NUMBER WIRE NUMBER 401 402 403 404 401E GND 3651	PT660A 10 YELLOW 14 GA. THHN STRANDED WIRE NUMBER WIRE NUMBER WIRE NUMBER WIRE NUMBER 401 402 403 404 401E GND 3651

* NOTE: THIS IS A SUGGESTED WIRE PULL DRAWING INTENDED AS REFERENCE MATERIAL DURING INSTALLATION. THE ELECTRICAL CONTRACTOR IS RESPONSIBLE FOR DETERMINING WIRE AND CONDUIT SIZES AS PER LOCAL CODES. WIRES LABELED AS (MUST BE KEPT SEPARATE) MUST BE RUN IN ITS OWN CONDUIT.

CATALYTIC PRODUCTS
INTERNATIONAL
TAKY SUGIHO, ILLINOIS

UNLESS OTHERWISE SPECIFIED:
DIMENSIONS ARE IN INCHES
FRACTIONS: 1/8
ANGLES: MATCH 1-800 2-1-
TWO PLACE DECIMAL ± 0.01
THREE PLACE DECIMAL ± 0.001
DO NOT SCALE DRAWING

DATE: 11/22/10
NAME: BKK
DRAWN: BKK
CHECKED: BKK
CUSTOMER: SPS
PROJECT NO.: 10/6345

TITLE: WIRE PULL DIAGRAM FOR QUADRANT SR-5500 THERMAL OXIDIZER "A"
SIZE DWG. NO.: 10-6345-81
SCALE: N/A
SHEET: 10 OF 10