

Office/Warehouse for Lease

605 Railroad St., Dupu, IL 62239



2,380 SF Office/Warehouse

BARBERMURPHY

COMMERCIAL REAL ESTATE SOLUTIONS
1173 Fortune Blvd., Shiloh, IL 62269
618.277.4400 BARBERMURPHY.COM

Joe Hardin
Broker Associate
Cell: (618) 660-8759
joeh@barbermurphy.com



BLDG #1 - FRONT BUILDING



Grade Level Doors

- (1) 7'x9'
- (1) 9'x9'



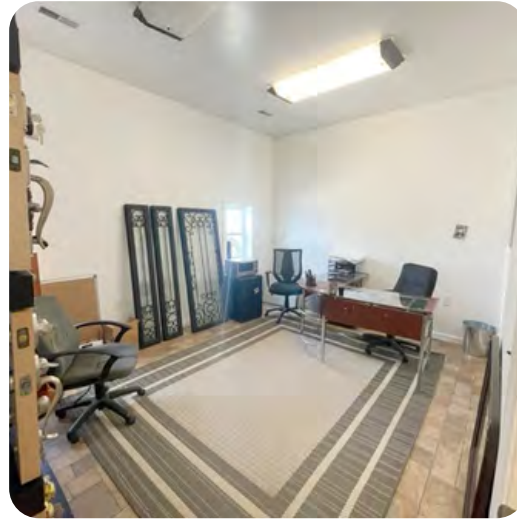
10'
Clear Height



3 Phase Power



4 Offices



2,380 SF - 4 average offices, two restrooms, reception area, shop area has gas heat and AC, (2) OHD's with door openers, small fenced outdoor storage yard, clean space, office were built new in 2008.

INDUSTRIAL PROPERTY INFO

605 RAILROAD ST., DUPO, IL - Bldg 1

LISTING # 2803

SQUARE FOOT INFO

Building SF: 2,380 SF
Direct Lease: 2,380 SF
Office SF: 400 SF
Warehouse SF: 1,980 SF

PROPERTY INFO

APN: 06-15.0-101-023, 026 06-15.0-107-027
County: IL - St. Clair
Zoning: Industrial

STRUCTURAL DATA

Year Built: 1984
Rehab Year: 2008
Max Clearance: 10'

FACILITY INFO

Grade Level Doors: (2) 9'x7' & 9'x9'
Power: 3 Phase



LEASE INFO:

Lease Rate: \$2,000/Month

Lease Type: Gross

PROPERTY DESCRIPTION

This is the front building 2,380 SF, it has 4 average offices, 2 restrooms, reception area, shop area has gas heat and ac 2 OHD's with door openers, small fenced outdoor storage yard, clean space, offices were built new in 2008.